

COTTER PINS



1/16" COTTER PINS

Part #	SIZE	QTY
191-000	1/16 X 1/2	100
191-001	1/16 X 3/4	100
191-002	1/16 X 1	100
191-003	1/16 X 1-1/4	100
191-004	1/16 X 1-1/2	100
191-006	1/16 X 2	100

5/64" COTTER PINS

Part #	SIZE	QTY
191-018	5/64 X 1	100
191-022	5/64 X 2	100

3/32" COTTER PINS

Part #	SIZE	QTY
191-040	3/32 X 1/2	100
191-041	3/32 X 3/4	100
191-042	3/32 X 1	100
191-043	3/32 X 1-1/4	100
191-044	3/32 X 1-1/2	100
191-045	3/32 X 1-3/4	100
191-046	3/32 X 2	100

7/64" COTTER PINS

Part #	SIZE	QTY
191-062	7/64 X 1	100
191-066	7/64 X 2	100

1/8" COTTER PINS

Part #	SIZE	QTY
191-081	1/8 X 3/4	100
191-082	1/8 X 1	100
191-083	1/8 X 1-1/4	100
191-084	1/8 X 1-1/2	100
191-085	1/8 X 1-3/4	100
191-086	1/8 X 2	100
191-087	1/8 X 2-1/4	50
191-088	1/8 X 2-1/2	50
191-090	1/8 X 3	50

5/32" COTTER PINS

Part #	SIZE	QTY
191-092	5/32 X 3/4	100
191-093	5/32 X 1	100
191-094	5/32 X 1-1/4	100
191-095	5/32 X 1-1/2	100
191-097	5/32 X 2	50
191-099	5/32 X 2-1/2	50
191-101	5/32 X 3	25

COTTER PINS



3/16" COTTER PINS

Part #	SIZE	QTY
191-200	3/16 X 3/4	50
191-201	3/16 X 1	50
191-202	3/16 X 1-1/4	50
191-204	3/16 X 1-1/2	50
191-205	3/16 X 1-3/4	50
191-206	3/16 X 2	50
191-207	3/16 X 2-1/4	50
191-208	3/16 X 2-1/2	25
191-210	3/16 X 3	25
191-214	3/16 X 4	25

1/4" COTTER PINS

Part #	SIZE	QTY
191-242	1/4 X 1	25
191-243	1/4 X 1-1/4	25
191-244	1/4 X 1-1/2	25
191-246	1/4 X 2	25
191-248	1/4 X 2-1/2	25
191-250	1/4 X 3	25
191-252	1/4 X 3-1/2	25
191-253	1/4 X 4	25
191-254	1/4 X 5	25
191-255	1/4 X 6	25

5/16" COTTER PINS

Part #	SIZE	QTY
191-256	5/16 X 1	25
191-264	5/16 X 1-1/2	25
191-266	5/16 X 2	10
191-270	5/16 X 3	10
191-274	5/16 X 4	10

3/8" COTTER PINS

Part #	SIZE	QTY
191-284	3/8 X 3	10
191-286	3/8 X 4	10
191-288	3/8 X 5	10

1/2" COTTER PINS

Part #	SIZE	QTY
191-299	1/2 X 5	10
191-303	1/2 X 6	10

HAIR COTTER PINS

Part #	DIAM	LENGTH	QTY
191-920	.026	3/8	25
191-924	.031	1/2	25
191-928	.046	15/16	25
191-932	.062	11/16	25
191-936	.062	53/64	25
191-940	.062	1"	25



BRIDGE PINS

Part #	DIAM	LENGTH	QTY
192-004	.028	39/64	25
192-006	.032	7/16	25
192-008	.042	15/16	25
192-010	.042	1"	25
192-014	3/64	1"	25
192-015	3/64	31/32	25
192-016	1/16	1-9/16	25
192-017	3/64	1-3/32	25
192-018	5/64	1-7/8	25
192-024	3/32	1-9/16	25
192-028	3/32	1-5/8	25
192-030	3/32	2-5/16	25
192-052	1/8	1-1/4	25
192-054	1/8	1-5/16	25
192-058	1/8	2-1/2	10
192-060	1/8	2-7/8	10
192-066	5/32	3	10
192-068	3/16	3-1/4	10
192-070	3/16	3-3/4	5
192-085	1/4	4-3/16	5
192-088	5/16	4	5



STAINLESS BRIDGE PINS

Part #	DIAM	LENGTH	QTY
192-135	.125	1-5/16	10
192-155	.148	2-15/6	10
192-175	.177	3-3/4	10

BOW TIE COTTER PINS

Part #	DIAM	LENGTH	QTY
192-240	.072	1-3/8	20
192-245	.091	1-7/8	20
192-250	.120	2-3/4	10
192-255	.120	2-3/4	10
192-260	.120	2-3/4	10
192-265	.148	3-37/64	5
192-270	.148	3-37/64	5
192-275	.177	3-37/64	5



UNIVERSAL CLEVIS PINS

Part #	SIZE	TYPE	QTY
193-004	1/4 X 2	UNIVERSAL	10
193-006	5/16 X 2	UNIVERSAL	10
193-008	3/8 X 2	UNIVERSAL	10
193-010	7/16 X 2	UNIVERSAL	10
193-012	1/2 X 2	UNIVERSAL	10
193-014	5/8 X 2	UNIVERSAL	5
193-015	5/8 X 3	UNIVERSAL	5



CLEVIS PINS

Part #	SIZE	QTY
193-026	3/16 X 1/2	10
193-027	3/16 X 5/8	10
193-028	3/16 X 3/4	10
193-030	3/6 X 1	10
193-032	3/16 X 1-1/4	10
193-034	3/16 x 1-1/2	10
193-036	1/4 X 3/4	10
193-038	1/4 X 1	10
193-040	1/4 X 1-1/4	10
193-042	1/4 X 1-1/2	10
193-044	1/4 x 1-3/4	10
193-046	1/4 x 2	10
193-048	5/16 X 3/4	10
193-050	5/16 X 1	10
193-054	5/16 X 1-1/4	10
193-056	5/16 X 1-1/2	10
193-058	5/16 X 1-3/4	10
193-060	5/16 x 2	10
193-062	3/8 X 3/4	10
193-064	3/8 X 1	10
193-066	3/8 X 1-1/4	10
193-068	3/8 X 1-1/2	10
193-070	3/8 X 1-3/4	10
193-072	3/8 x 2	10
193-074	7/16 X 1	10
193-076	7/16 X 1-1/4	10
193-078	7/16 X 1-1/2	10
193-080	7/16 X 1-3/4	10
193-082	7/16 X 2	10
193-084	1/2 X 1	10
193-085	1/2 X 1-1/4	10
193-086	1/2 X 1-1/2	10
193-088	1/2 X 1-3/4	10
193-090	1/2 X 2	10
193-092	1/2 x 2-1/2	10



LOCKING CLEVIS PINS ROUND WIRE



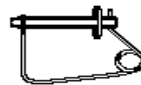
Part #	SIZE	TYPE	QTY
193-104	1/4 X 2-1/2	LOCKING PINS	5

LOCKING CLEVIS PINS SQUARE WIRE



Part #	SIZE	TYPE	QTY
193-140	1/4 X 2-1/4	LOCKING PINS	5
193-141	1/4 X 2-1/2	LOCKING PINS	5
193-144	5/16 X 2-1/4	LOCKING PINS	5
193-146	5/16 X 2-1/2	LOCKING PINS	5
193-148	3/8 X 2-1/4	LOCKING PINS	5
193-164	3/8 X 2-1/2	LOCKING PINS	5
193-168	3/8 X 3	LOCKING PINS	5

LOCKING SNAP PINS



J&B#	PIN DIAM	EFFECTIVE LENGTH	QTY
193-250	1/2	3-1/2	5

LOCKING SNAP PINS



J&B#	PIN DIAM	EFFECTIVE LENGTH	QTY
193-440	3/16	1	10
193-445	3/16	1-1/4	10
193-450	1/4	1-1/4	10
193-455	1/4	1-5/16	10
193-460	5/16	1-1/4	10
193-465	5/16	1-3/8	10
193-466	5/16	1-3/4	10
193-467	7/16	1-1/2	10
193-470	7/16	1-5/8	10
193-475	7/16	1-3/4	10

LOCKING SNAP PINS



BENT CLEVIS PINS



Part #	SIZE	QTY
193-550	5/8 X 4-1/2	EA
193-565	3/4 X 4-1/4	EA
193-575	3/4 X 6-1/4	EA
193-585	1 X 6-1/4	EA

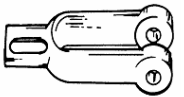
BENT CLEVIS PINS



Part #	SIZE	QTY
193-504	1/2 X 2-1/2	2
193-506	1/2 X 3	2
193-508	5/8 X 4	2

SOLD WITHOUT BRIDGE PIN

YOKE PINS

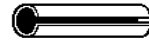


WELD ON D-RINGS



Part #	SIZE	TYPE	QTY
193-850	1/2"	12,000 LB FORGED	EA
193-860	5/8"	18,390 LB FORGED	EA
193-870	1"	47,000 LB FORGED	EA

SPRING PINS



1/16" SPRING PINS

Part #	SIZE	QTY
194-220	1/16 X 1/4	50
194-222	1/16 X 3/8	50
194-224	1/16 X 1/2	50
194-228	1/16 X 3/4	50
194-230	1/16 X 1	50

5/64" SPRING PINS

Part #	SIZE	QTY
194-240	5/64 X 1/4	50
194-244	5/64 X 1/2	50
194-246	5/64 X 5/8	50
194-248	5/64 X 3/4	50
194-250	5/64 X 1	25

3/32" SPRING PINS

Part #	SIZE	QTY
194-264	3/32 X 1/2	50
194-268	3/32 X 3/4	50
194-270	3/32 X 1	25
194-274	3/32 X 1-1/2	25

1/8" SPRING PINS

Part #	SIZE	QTY
194-282	1/8 X 3/8	50
194-284	1/8 X 1/2	50
194-286	1/8 X 5/8	50
194-288	1/8 X 3/4	50
194-290	1/8 X 1	25
194-292	1/8 X 1-1/4	25
194-294	1/8 X 1/1/2	25
194-296	1/8 X 1-3/4	15
194-298	1/8 X 2	15

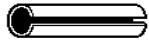
5/32" SPRING PINS

Part #	SIZE	QTY
194-314	5/32 X 1/2	50
194-318	5/32 X 3/4	50
194-320	5/32 X 1	25
194-322	5/32 X 1-1/4	25
194-324	5/32 X 1-1/2	25

3/16" SPRING PINS

Part #	SIZE	QTY
194-330	3/16 X 1/2	50
194-334	3/16 X 3/4	50
194-336	3/16 X 1	25
194-338	3/16 X 1-1/4	25
194-340	3/16 X 1-1/2	25
194-342	3/16 X 1-3/4	15
194-344	3/16 X 2	15

SPRING PINS



7/32" SPRING PINS

Part #	SIZE	QTY
194-350	7/32 X 3/4	25
194-352	7/32 X 1	15
194-354	7/32 X 1-1/4	15
194-356	7/32 X 1-1/2	15
194-358	7/32 X 1-3/4	15
194-360	7/32 X 2	15

1/4" SPRING PINS

Part #	SIZE	QTY
194-370	1/4 X 5/8	25
194-372	1/4 X 3/4	25
194-374	1/4 X 1	15
194-376	1/4 X 1-1/4	15
194-378	1/4 X 1-1/2	15
194-380	1/4 X 1-3/4	15
194-382	1/4 X 2	10
194-384	1/4 X 2-1/4	10
194-386	1/4 X 2-1/2	10
194-390	1/4 X 3	10

5/16" SPRING PINS

Part #	SIZE	QTY
194-410	5/16 X 3/4	10
194-412	5/16 X 1	10
194-414	5/16 X 1-1/2	10
194-418	5/16 X 2	10
194-420	5/16 X 2-1/2	10

3/8" SPRING PINS

Part #	SIZE	QTY
194-432	3/8 X 1	10
194-436	3/8 X 1-1/2	10
194-440	3/8 X 2	10
194-442	3/8 X 2-1/2	10
194-444	3/8 X 3	10

7/16" SPRING PINS

Part #	SIZE	QTY
194-456	7/16 X 1-1/2	10
194-462	7/16 X 2-1/2	10

1/2" SPRING PINS

Part #	SIZE	QTY
194-484	1/2 X 1-1/4	5
194-486	1/2 X 1-1/2	5
194-490	1/2 X 2	5
194-494	1/2 X 3	5
194-498	1/2 X 4	5

ROLLED PINS



Part #	SIZE	QTY
194-590	1/8 X 3/4	25
194-592	1/8 X 1	25
194-676	1/4 X 1-1/4	15

E-RINGS



Part #	Part #	QTY
196-102	3/32	100
196-104	1/8	100
196-106	5/32	100
196-108	3/16	100
196-110	7/32	100
196-112	1/4	50
196-114	5/16	50
196-116	3/8	25
196-118	7/16	25
196-120	1/2	25
196-122	9/16	25
196-124	5/8	25
196-126	3/4	25
196-128	7/8	20
196-130	1	20

WOODRUFF KEYS



3/32" WOODRUFF KEYS

Part #	SIZE	QTY
195-010	3/32 X 1/2	25
195-012	3/32 X 5/8	25

1/8" WOODRUFF KEYS

Part #	SIZE	QTY
195-016	1/8 X 1/2	25
195-018	1/8 X 5/8	25

5/32" WOODRUFF KEYS

Part #	SIZE	QTY
195-024	5/32 X 5/8	25
195-026	5/32 X 3/4	25
195-028	5/32 X 7/8	20

3/16" WOODRUFF KEYS

Part #	SIZE	QTY
195-030	3/16 X 3/4	25
195-032	3/16 X 7/8	20
195-034	3/16 X 1	20

1/4" WOODRUFF KEYS

Part #	SIZE	QTY
195-038	1/4 X 3/4	20
195-040	1/4 X 7/8	20
195-046	1/4 X 1	15
195-048	1/4 X 1-1/8	10
195-050	1/4 X 1-1/4	10

5/16" WOODRUFF KEYS

Part #	SIZE	QTY
195-072	5/16 X 1	10
195-074	5/16 X 1-1/8	10
195-076	5/16 X 1-1/4	10

3/8" WOODRUFF KEYS

Part #	SIZE	QTY
195-080	3/8 X 1	10
195-082	3/8 X 1-1/4	10

INT / EXT SNAP RINGS



INTERNAL



EXTERNAL

Part #	SIZE	QTY
197-306	1/4	50
197-308	5/16	50
197-312	3/8	25
197-314	7/16	25
197-316	1/2	25
197-320	9/16	25
197-322	5/8	20
197-323	11/16	15
197-324	3/4	15
197-325	13/16	15
197-326	7/8	15
197-328	1	10
197-330	1-1/16	10
197-332	1-1/8	10
197-334	1-3/16	10
197-336	1-1/4	10
197-338	1-5/16	10
197-340	1-3/8	10
197-342	1-7/16	10
197-344	1-1/2	10
197-346	1-5/8	10
197-348	1-3/4	10

Part #	SIZE	QTY
197-404	3/16	50
197-406	1/4	50
197-407	9/32	50
197-408	5/16	50
197-410	11/32	50
197-412	3/8	25
197-414	7/16	25
197-416	1/2	25
197-420	9/16	20
197-422	5/8	20
197-423	11/16	15
197-424	3/4	15
197-426	7/8	15
197-428	1	10
197-430	1-1/16	10
197-432	1-1/8	10
197-434	1-3/16	10
197-436	1-1/4	10
197-438	1-5/16	10
197-440	1-3/8	10
197-442	1-7/16	10
197-444	1-1/2	10
197-446	1-5/8	10
197-448	1-3/4	10
197-452	2	10
197-456	2-1/8	10
197-460	2-1/4	10
197-464	2-3/8	10
197-468	2-1/2	10

O-RINGS



1/16" O - RINGS

Part #	INT	EXT	QTY
198-006	1/8	1/4	25
198-007	5/32	9/32	25
198-008	3/16	5/16	25
198-009	7/32	11/32	25
198-010	1/4	3/8	25
198-011	5/16	7/16	25
198-012	3/8	1/2	25
198-013	7/16	9/16	15
198-014	1/2	5/8	15
198-015	9/16	11/16	15
198-016	5/8	3/4	15
198-017	11/16	13/16	15
198-018	3/4	7/8	15
198-019	13/16	15/16	15
198-020	7/8	1	15
198-021	15/16	1-1/16	15
198-022	1	1-1/8	10
198-023	1-1/16	1-3/16	10
198-024	1-1/8	1-1/4	10
198-025	1-3/16	1-5/16	10
198-026	1-1/4	1-3/8	10
198-027	1-5/16	1-3/8	10
198-028	1-3/8	1-1/2	10
198-029	1-1/2	1-5/8	10
198-030	1-5/8	1-3/4	5
198-031	1-3/4	1-7/8	5
198-032	1-7/8	2	5
198-033	2	2-1/8	5
198-034	2-1/8	2-1/4	5
198-035	2-1/4	2-3/8	5
198-036	2-3/8	2-1/2	5
198-037	2-1/2	2-5/8	5
198-038	2-5/8	2-3/4	5
198-039	2-3/4	2-7/8	5
198-040	2-7/8	3	5

3/32" O - RINGS

Part #	INT	EXT	QTY
198-108	1/4	7/16	25
198-109	5/16	1/2	25
198-110	3/8	9/16	25
198-111	7/16	5/8	25
198-112	1/2	11/16	25
198-113	9/16	3/4	10
198-114	5/8	13/16	10
198-115	11/16	7/8	10
198-116	3/4	15/16	10
198-117	13/16	1	10
198-118	7/8	1-1/16	10
198-119	15/16	1-1/8	10
198-120	1	1-3/16	10
198-121	1-1/16	1-1/4	10
198-122	1-1/8	1-5/16	10
198-123	1-3/16	1-3/8	10
198-124	1-1/4	1-7/16	10
198-125	1-5/16	1-1/2	10
198-126	1-3/8	1-9/16	10
198-127	1-7/16	1-5/8	5
198-128	1-1/2	1-11/16	5
198-129	1-9/16	1-3/4	5
198-130	1-5/8	1-13/16	5
198-132	1-3/4	1-15/16	5
198-134	1-7/8	2-1/16	5
198-136	2	2-3/16	5
198-138	2-1/8	2-5/16	5
198-140	2-1/4	2-7/16	5
198-142	2-3/8	2-9/16	5
198-144	2-1/2	2-11/16	5
198-147	2-11/16	2-7/8	5

O-RINGS



1/8" O - RINGS

Part #	INT	EXT	QTY
198-209	11/16	15/16	10
198-210	3/4	1	10
198-211	13/16	1-1/16	10
198-212	7/8	1-1/8	10
198-213	15/16	1-3/16	10
198-214	1	1-1/4	10
198-215	1-1/16	1-5/16	10
198-216	1-1/8	1-3/8	10
198-217	1-3/16	1-7/16	10
198-218	1-1/4	1-1/2	10
198-219	1-5/16	1-9/16	10
198-220	1-3/8	1-5/8	10
198-221	1-7/16	1-11/16	10
198-222	1-1/2	1-3/4	10
198-223	1-5/8	1-7/8	5
198-224	1-3/4	2	5
198-225	1-7/8	2-1/8	5
198-226	2	2-1/4	5
198-227	2-1/8	2-3/8	5
198-228	2-1/4	2-1/2	5
198-229	2-3/8	2-5/8	5
198-230	2-1/2	2-3/4	5
198-232	2-3/4	3	5

3/16" O - RINGS

Part #	INT	EXT	QTY
198-325	1-1/2	1-7/8	10
198-326	1-5/8	2	10
198-327	1-3/4	2-1/8	10
198-328	1-7/8	2-1/4	5
198-329	2	2-3/8	5
198-330	1-1/8	2-1/2	5
198-331	2-1/4	2-5/8	5
198-332	2-3/8	2-3/4	5
198-333	2-1/2	2-7/8	5
198-334	2-5/8	3	5
198-335	2-3/4	3-1/8	5
198-336	2-7/8	3-1/4	5
198-337	3	3-3/8	5
198-338	3-1/8	3-1/2	5
198-339	3-1/4	3-5/8	5
198-340	3-3/8	3-3/4	5
198-341	3-1/2	3-7/8	5
198-342	3-5/8	4	5
198-343	3-3/4	4-1/8	5
198-344	3-7/8	4-1/4	5
198-345	4	4-3/8	5
198-346	4-1/8	4-1/2	5
198-347	4-1/4	4-5/8	5

O-RING REPAIR KIT

Part #	SIZE	QTY
0198-09	KIT	EA



METRIC O- RINGS



2.0" O - RINGS

Part #	INT	EXT	QTY
198-706	3 M	7 M	10
198-708	4 M	8 M	10
198-710	5 M	9 M	10
198-712	6 M	10 M	10
198-714	7 M	11 M	10
198-716	8 M	12 M	10
198-718	9 M	13 M	10
198-720	10 M	14 M	10
198-722	11 M	15 M	10
198-724	12 M	16 M	10
198-726	14 M	18 M	10
198-740	28 M	32 M	10

2.5" O - RINGS

Part #	INT	EXT	QTY
198-750	10 M	15 M	10
198-754	11 M	16 M	10
198-758	12 M	17 M	10
198-760	14 M	19 M	10
198-764	16 M	21 M	10
198-768	17 M	22 M	10
198-772	19 M	24 M	10

3.0" O - RINGS

Part #	INT	EXT	QTY
198-840	19 M	25 M	5
198-844	20 M	26 M	5
198-848	22 M	28 M	5
198-852	24 M	30 M	5
198-856	25 M	31 M	5
198-860	27 M	33 M	5
198-864	28 M	34 M	5
198-868	30 M	36 M	5
198-872	32 M	38 M	5
198-876	33 M	39 M	5
198-878	35 M	41 M	5
198-880	36 M	42 M	5
198-882	38 M	44 M	5

4.0" O - RINGS

Part #	INT	EXT	QTY
198-940	38 M	46 M	5
198-944	41 M	49 M	5
198-948	44 M	52 M	5

SQUARE & FLAT KEY STOCK



12" KEY STOCK

Part #	SIZE	QTY
199-004	1/8	EA
199-006	5/32	EA
199-008	3/16	EA
199-012	1/4	EA
199-014	5/16	EA
199-016	3/8	EA
199-018	7/16	EA
199-019	1/2	EA
199-020	9/16	EA
199-022	5/8	EA
199-024	3/4	EA
199-026	7/8	EA
199-028	1	EA

12" FLAT KEY STOCK

Part #	SIZE	QTY
199-150	1/8 X 3/16	EA
199-154	1/8 X 1/4	EA
199-158	3/16 X 1/4	EA
199-162	3/16 X 5/16	EA
199-166	3/16 X 3/8	EA
199-170	1/4 X 5/16	EA
199-176	1/4 X 3/8	EA
199-180	3/16 X 1/2	EA
199-184	1/4 X 1/2	EA
199-188	5/16 X 3/8	EA
199-192	5/16 X 1/2	EA
199-196	3/8 X 1/2	EA

POP RIVITS

ALUMINUM STEEL 1/8" POP RIVITS

Alum	Steel	SIZE	IND #	QTY
201-002	201-012	1/8	4-2	100
201-004	201-014	1/8	4-4	100
201-006		1/8	4-5	100
201-008	201-018	1/8	4-6	100
201-010	201-020	1/8	4-8	100



ALUMINUM STEEL 5/32" POP RIVITS

Alum	Steel	SIZE	IND #	QTY
201-022		5/32	5-4	100

ALUMINUM STEEL 3/16" POP RIVITS

Alum	Steel	SIZE	IND #	QTY
	201-132	3/16	6-2	100
201-034	201-134	3/16	6-4	100
201-036	201-136	3/16	6-6	100
201-038	201-138	3/16	6-8	100

ALUM / STEEL 1/4" H/D RIVIT

Alum	Steel	SIZE	IND #	QTY
201-040		1/4	8-6	100
		1/4	8-8	100



LARGE FLANGE POP RIVITS



ALUM / STEEL 3/16" LARGE FLANGE

Alum	Steel	SIZE	IND #	QTY
201-206		3/16	6-6	50
201-208	201-238	3/16	6-8	50
201-210		3/16	6-8	250
201-212		3/16	6-10	50
	201-250	3/16	6-12	25

STEEL 1/4" H/D RIVIT

Part #	SIZE	IND #	TYPE	QTY
201-262	1/4	.030 / .140	WINDOW	25
201-270	1/4	.090 / .115	DOOR	25
201-274	1/4		WINDOW	25

PEEL RIVITS

STEEL 1/4" H/D RIVIT

Part #	SIZE	IND #	QTY
201-278	1/4	1/4 X 1/2	25
201-292	1/4	1/4 X 3/8	25
201-294	1/4	1/4 X 1/2	25



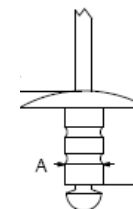
MULTI-GRIP BLIND RIVITS

Alum	SIZE	Auveco	POP #	GRIP	QTY
201-328	1/8	18742	AD41-43BS	1/32 - 3/16	100
201-332	1/8	19025	AD43-45BS	5/32 - 5/16	100
201-336	1/8	19026	AD45-47BS	1/4 - 7/16	100
201-340	5/32	18743	AD52-54BS	3/64 - 1/4	100
201-344	5/32	19027	AD53-55BS	1/8 - 5/16	50
201-348	3/16	18744	AD62-64BS	1/16 - 1/4	50
201-352	3/16	19028	AD63-66BS	3/16 - 3/8	50
201-356	3/16	19029	AD66-68BS	1/4 - 1/2	50
201-360	3/16	19030	AD68-612BS	7/16 - 3/4	50
201-364	1/4	19031	AD82-86BS	5/64 - 11/32	25



MULTI-GRIP BLIND RIVITS LARGE FLANGE

Alum	SIZE	Auveco	POP #	GRIP	QTY
201-368	1/8	19033	AD41-43BSLF	3/64 - 3/16	100
201-372	1/8	19034	AD43-45BSLF	5/32 - 5/16	100
201-376	5/32	17468	AD52-54BSLF	3/64 - 1/4	50
201-380	3/16	19036	AD62-64BSLF	1/16 - 1/4	50
201-384	3/16	19037	AD66-68BSLF	1/4 - 1/2	50



AVEX BRAZIER HEAD RIVITS

Alum	SIZE	Auveco	GRIP	QTY
201-420	3/16	17432	1/16 - 1/4	50
201-424	3/16	17433	3/16 - 7/16	50



KLAMP-TITE RIVITS

Alum	SIZE	Auveco	GRIP	QTY
201-432	3/16	13766	3/64 - 1/4	50
201-436	3/16	13767	3/16 - 3/8	50
201-448	1/4	13769	3/64 - 1/4	25
201-450	1/4	13770	3/16 - 3/8	25



CLOSED – END RIVETS



Alum	SIZE	Auveco	GRIP	QTY
201-510	3/16	17414	1/16-1/8	50
201-514	3/16	17415	1/8-1/4	50
201-518	3/16	17416	1/4-3/8	50

SPLIT LARGE FLANGE



Alum	SIZE	Auveco	GRIP	QTY
201-470	1/4	17639	3/16 – 3/8	15

Split-Type Rivet Diameter: 1/4" Grip: 3/16"-3/8" Flange Dia: 11/16"

MONOBOLT RIVETS



Part #	SIZE	IND #	TYPE	QTY
202-050	3/16	SSPV-64	STEEL	100
202-054	3/16	SSPV-E67	STEEL	100
202-075	1/4	SSPV-86	STEEL	100
202-078	1/4	SSPV-E810	STEEL	100

T- RIVETS INTERLOCK

Part #	SIZE	IND #	TYPE	QTY
202-090	1/4	MGLP-U8-6	STEEL	100
202-125	1/4	SSPI-86	STEEL	100

STAINLESS MONOBOLT RIVETS



STAINLESS 1/4" H/D RIVIT

Part #	SIZE	IND #	QTY
202-215	3/16	SSB6-8S	25
202-255	1/4	MGLP-U8 - 6	25
202-260	1/4	MGLP-U8 - 10	25

RIVIT GUN NOSE PIECES

Part #	QTY
200-950	MONO-BOLT
200-955	INTERLOCK



RIVIT TOOLS AND NUT SETTERS

PLASTIC RIVIT SETTING TOOL

Part #	QTY
202-280	RIVIT TOOL



POP RIVIT TOOL

Part #	QTY
202-270	RIVIT TOOL



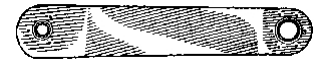
H/D NUTSERT TOOL / RIVIT / MONOBOLTS

Part #	ITEM
202-999	HEAVY DUTY NUTSERT/MONOBOLT TOOL



LARGE FLANGE SERRATED NUTSERTS

Part #	SIZE	QTY
203-001	6-32	25
203-002	8-32	25
203-004	10-24	25
203-006	10-32	25
203-008	1/4-20	25
203-010	5/16-18	10
203-012	3/8-16	10



JACK NUT SETTING TOOL

Part #	QTY
203-040	RIVIT TOOL

JACK NUTS

Part #	SIZE	QTY
203-050	10-24	25
203-060	1/4-20	25



RUBBER WELL NUTS

Part #	SIZE	HEAD O.D.	QTY
203-150	10-32	.500	25
203-155	10-32	.562	25
203-160	10-32	.750	25
203-162	1/4-20	.625	25
203-175	1/4-20	.740	10



JACK NUT & STAINLESS BOLT

Part #	SIZE	QTY
203-075	1/4-20	10



HELI-COILS



HELICOILS USS

Part #	SIZE	QTY
204-500	10-24	10
204-502	10-32	10
204-504	1/4-20	5
204-506	5/16-18	5
204-507	3/8-16	5
204-508	7/16-14	5
204-510	1/2-13	5
204-511	9/16-12	2
204-512	5/8-11	2
204-514	3/4-10	2
204-516	7/8-9	2
204-518	1-8	2

KITS EA

Part #	SIZE
204-700	10-24
204-702	10-32
204-704	1/4-20
204-706	5/16-18
204-707	3/8-16
204-708	7/16-14
204-710	1/2-13
204-711	9/16-12
204-712	5/8-11
204-714	3/4-10
204-716	7/8-9
204-718	1-8

HELICOILS SAE

Part #	SIZE	QTY
204-535	1/4-28	5
204-536	5/16-24	5
204-537	3/8-24	5
204-538	7/16-20	5
204-539	1/2-20	5
204-540	9/16-18	2
204-541	5/8-18	2
204-542	3/4-16	2
204-543	7/8-14	2
204-544	1-14	2

KITS EA

Part #	SIZE
204-720	10-32
204-735	1/4-28
204-736	5/16-24
204-737	3/8-24
204-738	7/16-20
204-739	1/2-20
204-740	9/16-18
204-741	5/8-18
204-742	3/4-16
204-743	7/8-14
204-744	1-14

HELICOILS METRIC

Part #	SIZE	QTY
204-628	6 X 1.00	5
204-632	8 X 1.25	5
204-636	10 X 1.50	5
204-640	12 X 1.75	5
204-644	14 X 2.00	2
204-660	16 X 2.00	2

KITS EA

Part #	SIZE
204-778	6 X 1.00
204-780	8 X 1.25
204-782	10 X 1.50
204-784	12 X 1.75
204-790	14 X 2.00
204-794	16 X 2.00

KEENSERTS



KEENSERTS USS

Part #	SIZE	QTY
204-812	10-24	5
204-816	10-32	5
204-820	1/4-20	5
204-824	5/16-18	5
204-828	3/8-16	5
204-832	7/16-14	5
204-836	1/2-13	3
204-846	5/8-11	2
204-848	3/4-10	2
204-850	7/8-9	2
204-852	1-8	2

KEENSERTS SAE

Part #	SIZE	QTY
204-822	1/4-28	5
204-826	5/16-24	5
204-830	3/8-24	5
204-834	7/16-20	5
204-838	1/2-20	3
204-847	5/8-18	2
204-849	3/4-16	2
204-851	7/8-14	2
204-853	1-14	2

Keenserts Metric

Part #	SIZE	QTY
204-855	5 X .80	5
204-857	6 X 1.00	5
204-861	8 X 1.25	5
204-865	8 X 1.00	5
204-869	10 X 1.50	2
204-872	10 X 1.25	2
204-876	12 X 1.75	2
204-882	14 X 2.00	2

MASTER ROLLER LINKS



Part #	SIZE	QTY
211-503	# 35	4
211-505	# 40	4
211-507	# 41	4
211-510	# 50	4
211-515	# 60	4

OFFSET ROLLER LINKS



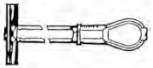
Part #	SIZE	QTY
211-553	# 35	4
211-555	# 40	4
211-557	# 41	4
211-560	# 50	4
211-565	# 60	4

ROLLER CHAIN



Part #	SIZE	QTY
212-595	# 35 X 10'	EA
212-600	# 40 X 10'	EA
212-602	# 41 X 10'	EA
212-610	# 50 X 10'	EA
212-620	# 60 X 10'	EA

TOGGLE ANCHORS



Part #	SIZE	QTY
215-008	10-24	25
215-010	1/4-20	25
215-012	5/16-18	25
215-014	3/8-16	25
215-018	1/2-13	25

ANCHOR KITS



Part #	SIZE	QTY
215-139	# 6 - #8	KIT
215-140	#8 - #10	KIT
215-141	#10 - #12	KIT



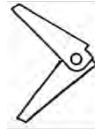
PLASTIC ANCHORS



Part #	SIZE	COLOR	QTY
215-148	6-8	RED	100
215-149	8-10	RED	100
215-150	10-12	BLUE	100
215-152	14-16	BLUE	100



TOGGLE WINGS



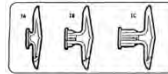
Part #	SIZE	QTY
215-225	10-24	50
215-230	1/4-20	50
215-232	5/16-18	25
215-324	3/8-16	25
215-239	1/2-13	10

TOGGLE WING ANCHORS



Part #	SIZE	QTY
215-025	1/8 X 3	100
215-030	3/16 X 3	100

DRY WALL ANCHORS



Part #	SIZE	QTY
215-325	1/8 - 1/4	50
215-330	3/8 - 1/2	50
215-335	5/8 - 3/4	50

DRY WALL ANCHORS



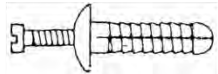
METAL DRY WALL ANCHORS

Part #	SIZE	QTY
215-512	8 - 10	50

NYLON DRY WALL ANCHORS

Part #	SIZE	QTY
215-525	8 - 10	50

NAILON PIN DRIVE ANCHORS



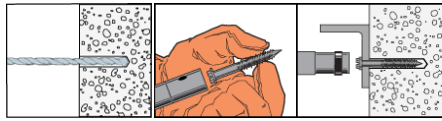
NYLON MUSHROOM HEAD

Part #	MFG #	SIZE	QTY
215-608	N18100M	3/16 X 1	100
215-622	NS25100M	1/4 X 1	100
215-624	NS25112M	1/4 X 1-1/2	100
215-626	NS25200M	1/4 X 2	100

ZINC MUSHROOM HEAD

Part #	MFG #	SIZE	QTY
215-642	ZNS25100M	1/4 X 1	100
215-644	ZNS25112M	1/4 X 1-1/2	100
215-646	ZNS25200M	1/4 X 2	100

TAP-CONN HEX HEAD ANCHORS



Part #	MFG #	SIZE	QTY
216-530	TTN18114H	3/16 X 1-1/4	100
216-534	TTN18134H	3/16 X 1-3/4	100
216-538	TTN18214H	3/16 X 2-1/4	100
216-542	TTN18234H	3/16 X 2-3/4	100
216-546	TTN18314H	3/16 X 3-1/4	100
216-550	TTN18334H	3/16 X 3-3/4	100
216-554	TTN18400H	3/16 X 4	100
216-570	TTN25114H	1/4 X 1-1/4	100
216-574	TTN25134H	1/4 X 1-3/4	100
216-578	TTN25214H	1/4 X 2-1/4	100
216-582	TTN25234H	1/4 X 2-3/4	100
216-586	TTN25314H	1/4 X 3-1/4	100
216-590	TTN25334H	1/4 X 3-3/4	100



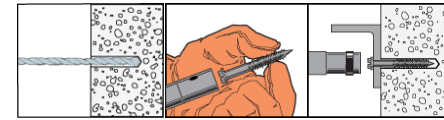
NOTE: EACH KIT INCLUDES 1 DRILL

TAP CONN DRILL



Part #	MFG #	SIZE	DRILL	QTY
216-512	MDB15312	5/32 X 3-1/2	TO 1-3/4	EA
216-514	MDB15412	5/32 X 4-1/2	TO 3-1/4 TO 4	EA
216-516	MDB15512	5/32 X 5-1/2		EA
216-520	MDB18312	3/16 X 3-1/2	TO 1-3/4	EA
216-522	MDB18412	3/16 X 4-1/2	TO 3-1/4 TO 4	EA
216-524	MDB18512	3/16 X 5-1/2		EA

TAP-CONN PHIL HEAD ANCHORS



Part #	MFG #	SIZE	QTY
216-630	TTN18114PH	3/16 X 1-1/4	100
216-634	TTN18134PH	3/16 X 1-3/4	100
216-638	TTN18214PH	3/16 X 2-1/4	100
216-642	TTN18234PH	3/16 X 2-3/4	100
216-646	TTN18314PH	3/16 X 3-1/4	100
216-650	TTN18334PH	3/16 X 3-3/4	100
216-654	TTN18400PH	3/16 X 4	100
216-670	TTN25114PH	1/4 X 1-1/4	100
216-674	TTN25134PH	1/4 X 1-3/4	100
216-678	TTN25214PH	1/4 X 2-1/4	100
216-682	TTN25234PH	1/4 X 2-3/4	100
216-686	TTN25314PH	1/4 X 3-1/4	100
216-690	TTN25334PH	1/4 X 3-3/4	100
216-694	TTN25400PH	1/4 X 4	100



NOTE: EACH KIT INCLUDES 1 DRILL

TAP-CONN INSTALL KIT

Part #	QTY
216-504	KIT



ANCHORS

FAB LOCK ANCHORS

Part #	SIZE	QTY
217-120	10-8	100



STUD ANCHORS



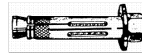
SHORT LAG SCREW EXPANSION ANCHORS

Part #	MFG #	SIZE	QTY
217-742	LSES25S	1/4 X 1	100
217-744	LSES31S	5/16 X 1-1/4	100
217-746	LSES37S	3/8 X 1-3/4	50
217-748	LSES50S	1/2 X 2	25

LONG LAG SCREW EXPANSION ANCHORS

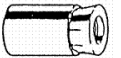
Part #	MFG #	SIZE	QTY
217-762	LSES25L	1/4 X 1-1/2	50
217-764	LSES31L	5/16 X 1-3/4	50
217-766	LSES37L	3/8 X 2-1/2	50
217-768	LSES50L	1/2 X 1-3/4	25

SLEEVE ANCHORS



Part #	SIZE	QTY
217-220	1/4 X 1-3/8	100
217-228	5/16 X 1-1/2	100
217-235	3/8 X 1-7/8	50
217-238	3/8 X 3	50
217-255	3/8 X 3-3/4	25
217-265	1/2 X 3	25

ANCHORS



WEDGE ANCHORS



WEDGE ANCHORS

Part #	SIZE	QTY
217-520	3/8 X 2-3/4	50
217-530	1/2 X 2-3/4	25
217-585	5/8 X 3-1/2	20

GALVANIZED WEDGE ANCHORS

Part #	SIZE	QTY
217-650	1/2 X 4-1/2	25

218: ROPE CLAMPS

WIRE ROPE CLAMPS



Part #	SIZE	QTY
218-340	1/8	10
218-342	3/16	10
218-344	1/4	10
218-346	5/16	5
218-348	3/8	5
218-350	1/2	5
218-352	5/8	5
218-354	3/4	5
218-356	7/8	EA

218: CABLE LINKS

QUICK LINK



Part #	SIZE	QTY
218-492	1/8	2
218-494	3/16	2
218-495	1/4	2
218-496	5/16	2
218-498	3/8	2
218-500	1/2	2

GRAB HOOK CLEVIS



Part #	SIZE	QTY
218-408	1/4	EA
218-410	5/16	EA
218-412	3/8	EA
218-414	7/16	EA
218-416	1/2	EA

COLD SHUTS



Part #	SIZE	QTY
218-524	1/4	5
218-526	5/16	5
218-528	3/8	5
218-530	7/16	5
218-532	1/2	5

SLIP HOOK CONNECT LINK



Part #	SIZE	QTY
218-424	1/4	EA
218-426	5/16	EA
218-428	3/8	EA
218-430	7/16	EA
218-432	1/2	EA

STEEL SPRING LINKS



Part #	SIZE	QTY
222-515	1/4	5
222-520	5/16	5
222-530	3/8	5

DOUBLE CHAIN LINKS



Part #	SIZE	QTY
218-464	1/4	EA
218-466	5/16	EA
218-468	3/8	EA
218-470	7/16	EA
218-472	1/2	EA

STEEL SPRING LINKS SCREW TIGHT



Part #	SIZE	QTY
222-580	1/4	5
222-585	5/16	5
222-590	3/8	5
222-595	7/16	5
222-600	1/2	5

WIRE ROPE THIMBLES



ALUM OVAL CRIMP SLEEVES



Part #	SIZE	QTY
223-502	1/16	10
223-506	3/32	10
223-510	1/8	10
223-514	3/16	10
223-518	1/4	10

ANCHOR SHACKLES



Part #	SIZE	QTY
222-652	1/4	2
222-654	5/16	2
222-656	3/8	2
222-660	1/2	2
222-664	5/8	EA
222-666	3/4	EA
222-670	1"	EA

COATED GALVANIZED AIR CRAFT CABLE



Part #	SIZE	QTY
223-552	1/16 X 1/8	100'
223-556	3/32 X 1/8	100'
223-560	1/8 X 3/16	100'
223-564	3/16 X 1/4	100'
223-568	1/4 X 5/16	100'

CONNECTING LINKS



UNCOATED GALVANIZED AIR CRAFT CABLE



Part #	SIZE	QTY
223-572	1/16	100'
223-576	3/32	100'
223-580	1/8	100'
223-584	3/16	100'
223-588	1/4	100'

EYE BOLTS



Part #	SIZE	QTY
223-654	10-24 X 11/16	5
223-658	1/2-40 X 2	5
223-662	1/4-20 X 4	5
223-674	5/16-18 X 4	5

WELDED CLOSED EYE BOLTS



Part #	SIZE	QTY
223-724	1/4-20 X 1	5
223-730	5/16-18 X 1-1/8	5
223-736	3/8-16 X 1-1/4	5
223-742	1/2-13 X 1-1/2	5
223-745	1/2-13 X 3-1/4	5
223-748	5/8-11 X 1-3/4	EA
223-754	3/4-10 X 2	EA