



1/4-20 DIAMETER

USS	LGTH	QTY
106-006	1/2	100
106-008	5/8	100
106-010	3/4	100
106-012	1	100
106-014	1-1/4	100
106-016	1-1/2	100
106-018	1-3/4	100
106-020	2	100
106-022	2-1/4	100
106-024	2-1/2	100
106-026	2-3/4	50
106-028	3	50
106-030	3-1/4	50
106-032	3-1/2	50
106-036	4	25
106-038	4-1/2	25
106-040	5	25
106-044	5-1/2	25
106-044	6	25
106-048	7	25

5/16-18 DIAMETER

USS	LGTH	QTY
106-056	1/2	100
106-058	5/8	100
106-060	3/4	100
106-062	1	100
106-064	1-1/4	100
106-066	1-1/2	100
106-068	1-3/4	100
106-070	2	100
106-072	2-1/4	50
106-074	2-1/2	50
106-076	2-3/4	50
106-078	3	50
106-080	3-1/4	25
106-082	3-1/2	25
106-086	4	25
106-088	4-1/2	25
106-090	5	25
106-092	5-1/2	25
106-094	6	25

3/8-16 DIAMETER

USS	LGTH	QTY
106-106	1/2	100
106-108	5/8	100
106-110	3/4	100
106-112	1	100
106-114	1-1/4	100
106-116	1-1/2	100
106-118	1-3/4	100
106-120	2	100
106-122	2-1/4	50
106-124	2-1/2	50
106-126	2-3/4	50
106-128	3	50
106-130	3-1/4	25
106-132	3-1/2	25
106-136	4	25
106-138	4-1/2	25
106-140	5	25
106-142	5-1/2	25
106-144	6	25
106-146	6-1/2	25
106-148	7	25
106-149	9	25
106-151	11	ea
106-153	12	ea

7/16-14 DIAMETER

USS	LGTH	QTY
106-160	3/4	50
106-162	1	50
106-164	1-1/4	50
106-166	1-1/2	50
106-168	1-3/4	25
106-170	2	25
106-172	2-1/4	25
106-174	2-1/2	25
106-176	2-3/4	25
106-178	3	25
106-180	3-1/4	25
106-182	3-1/2	25
106-186	4	25
106-188	4-1/2	25
106-190	5	25
106-192	5-1/2	25
106-194	6	25



1/2-13 DIAMETER

USS	LGTH	QTY
106-212	1	50
106-214	1-1/4	50
106-216	1-1/2	50
106-218	1-3/4	50
106-220	2	50
106-222	2-1/4	25
106-224	2-1/2	25
106-226	2-3/4	25
106-228	3	25
106-230	3-1/4	25
106-232	3-1/2	25
106-236	4	15
106-238	4-1/2	15
106-240	5	15
106-242	5-1/2	15
106-244	6	15
106-246	6-1/2	15
106-248	7	15
106-250	7-1/2	15
106-252	8	15
106-253	8-1/2	15
106-254	9	15

9/16-12 DIAMETER

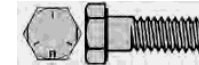
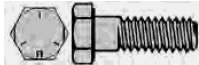
USS	LGTH	QTY
106-262	1	15
106-264	1-1/4	15
106-266	1-1/2	15
106-268	1-3/4	15
106-270	2	15
106-272	2-1/4	15
106-274	2-1/2	15
106-276	2-3/4	15
106-278	3	15
106-282	3-1/2	10
106-286	4	10
106-288	4-1/2	10
106-290	5	10

5/8-11 DIAMETER

USS	LGTH	QTY
106-312	1	15
106-314	1-1/4	15
106-316	1-1/2	15
106-318	1-3/4	15
106-320	2	15
106-322	2-1/4	15
106-324	2-1/2	15
106-326	2-3/4	15
106-328	3	15
106-330	3-1/4	10
106-332	3-1/2	10
106-336	4	10
106-338	4-1/2	10
106-340	5	10
106-342	5-1/2	10
106-344	6	10
106-346	6-1/2	10
106-348	7	10
106-352	8	10

3/4-10 DIAMETER

USS	LGTH	QTY
106-362	1	15
106-364	1-1/4	15
106-366	1-1/2	15
106-368	1-3/4	15
106-370	2	15
106-372	2-1/4	15
106-374	2-1/2	15
106-376	2-3/4	10
106-378	3	10
106-380	3-1/4	10
106-382	3-1/2	10
106-386	4	10
106-388	4-1/2	10
106-390	5	10
106-392	5-1/2	10
106-394	6	10
106-396	6-1/2	10
106-398	7	10
106-402	8	10
106-404	10	10



7/8-9 DIAMETER

USS	LGTH	QTY
106-416	1-1/2	5
106-418	1-3/4	5
106-420	2	5
106-422	2-1/4	5
106-424	2-1/2	5
106-426	2-3/4	5
106-428	3	5
106-430	3-1/4	5
106-432	3-1/2	5
106-436	4	5
106-438	4-1/2	5
106-440	5	5
106-442	5-1/2	5
106-444	6	5
106-445	6-1/2	5
106-451	8	5
106-456	9	5

1-8 DIAMETER

USS	LGTH	QTY
106-466	1-1/2	5
106-468	1-3/4	5
106-470	2	5
106-474	2-1/2	5
106-478	3	5
106-482	3-1/2	5
106-486	4	5
106-488	4-1/2	5
106-490	5	5
106-492	5-1/2	5
106-494	6	5
106-502	9	5
106-505	12	5



1/4-28 DIAMETER

USS	LGTH	QTY
106-506	1/2	50
106-508	5/8	50
106-510	3/4	50
106-512	1	50
106-514	1-1/4	50
106-516	1-1/2	50
106-518	1-3/4	50
106-520	2	50
106-522	2-1/4	25
106-524	2-1/2	25
106-526	2-3/4	25
106-528	3	25
106-530	3-1/4	25
106-532	3-1/2	25
106-536	4	25
106-538	4-1/2	25
106-540	5	25
106-544	5-1/2	25
106-544	6	25

3/8-24 DIAMETER

USS	LGTH	QTY
106-606	1/2	50
106-608	5/8	50
106-610	3/4	50
106-612	1	50
106-614	1-1/4	50
106-616	1-1/2	50
106-618	1-3/4	25
106-620	2	25
106-622	2-1/4	25
106-624	2-1/2	25
106-626	2-3/4	25
106-628	3	25
106-630	3-1/4	25
106-632	3-1/2	25
106-636	4	25
106-638	4-1/2	25
106-640	5	25
106-642	5-1/2	25
106-644	6	25
106-646	6-1/2	25
106-648	7	25

5/16-24 DIAMETER

USS	LGTH	QTY
106-556	1/2	50
106-558	5/8	50
106-560	3/4	50
106-562	1	50
106-564	1-1/4	50
106-566	1-1/2	50
106-568	1-3/4	50
106-570	2	50
106-572	2-1/4	25
106-574	2-1/2	25
106-576	2-3/4	25
106-578	3	25
106-580	3-1/2	25
106-582	4	25
106-586	4-1/2	25
106-588	5	25
106-590	5-1/2	25
106-592	6	25

7/16-20 DIAMETER

USS	LGTH	QTY
106-660	3/4	25
106-662	1	25
106-664	1-1/4	25
106-666	1-1/2	25
106-668	1-3/4	25
106-670	2	25
106-672	2-1/4	25
106-674	2-1/2	25
106-676	2-3/4	25
106-678	3	25
106-680	3-1/4	25
106-682	3-1/2	25
106-686	4	15
106-688	4-1/2	15
106-690	5	15
106-692	5-1/2	15
106-694	6	15



1/2-20 DIAMETER

USS	LGTH	QTY
106-710	3/4	25
106-712	1	25
106-714	1-1/4	25
106-716	1-1/2	25
106-718	1-3/4	25
106-720	2	25
106-722	2-1/4	25
106-724	2-1/2	25
106-726	2-3/4	25
106-728	3	25
106-730	3-1/4	25
106-732	3-1/2	25
106-736	4	15
106-738	4-1/2	15
106-740	5	15
106-742	5-1/2	15
106-744	6	15
106-746	6-1/2	15
106-748	7	15

5/8-18 DIAMETER

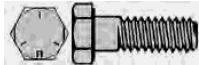
USS	LGTH	QTY
106-812	1	15
106-814	1-1/4	15
106-816	1-1/2	15
106-818	1-3/4	15
106-820	2	15
106-822	2-1/4	15
106-824	2-1/2	15
106-826	2-3/4	15
106-828	3	15
106-830	3-1/4	10
106-832	3-1/2	10
106-836	4	10
106-838	4-1/2	10
106-840	5	10
106-842	5-1/2	10
106-844	6	10
106-846	6-1/2	10
106-848	7	10
106-852	8	10

9/16-18 DIAMETER

USS	LGTH	QTY
106-762	1	15
106-764	1-1/4	15
106-766	1-1/2	15
106-768	1-3/4	15
106-770	2	15
106-772	2-1/4	15
106-774	2-1/2	15
106-776	2-3/4	15
106-778	3	15
106-782	3-1/2	10
106-786	4	10
106-788	4-1/2	10
106-790	5	10

3/4-16 DIAMETER

USS	LGTH	QTY
106-862	1	15
106-864	1-1/4	15
106-866	1-1/2	15
106-868	1-3/4	15
106-870	2	15
106-872	2-1/4	15
106-874	2-1/2	15
106-876	2-3/4	10
106-878	3	10
106-880	3-1/4	10
106-882	3-1/2	10
106-886	4	10
106-888	4-1/2	10
106-890	5	10
106-892	5-1/2	10
106-894	6	10
106-896	6-1/2	10
106-898	7	10
106-802	8	10



7/8-14 DIAMETER

USS	LGTH	QTY
106-916	1-1/2	5
106-918	1-3/4	5
106-920	2	5
106-922	2-1/4	5
106-924	2-1/2	5
106-926	2-3/4	5
106-928	3	5
106-930	3-1/4	5
106-932	3-1/2	5
106-936	4	5
106-938	4-1/2	5
106-940	5	5
106-942	5-1/2	5
106-944	6	5

1-14 DIAMETER

USS	LGTH	QTY
106-966	1-1/2	5
106-968	1-3/4	5
106-970	2	5
106-974	2-1/2	5
106-978	3	5
106-982	3-1/2	5
106-986	4	5
106-988	4-1/2	5
106-990	5	5
106-992	5-1/2	5
106-994	6	5





1/4-20 DIAMETER

USS	LGTH	QTY
107-008	1/2	100
107-010	3/4	100
107-012	1	100
107-014	1-1/4	100
107-016	1-1/2	100
107-018	1-3/4	100
107-020	2	100
107-022	2-1/4	100
107-024	2-1/2	100
107-026	2-3/4	50
107-028	3	50
107-030	3-1/4	50
107-032	3-1/2	50
107-034	3-3/4	50
107-036	4	25
107-038	4-1/2	25
107-040	5	25
107-044	5-1/2	25
107-044	6	25
107-048	7	25

5/16-18 DIAMETER

USS	LGTH	QTY
107-058	1/2	100
107-060	3/4	100
107-062	1	100
107-064	1-1/4	100
107-066	1-1/2	100
107-068	1-3/4	100
107-070	2	100
107-072	2-1/4	50
107-074	2-1/2	50
107-076	2-3/4	50
107-078	3	50
107-080	3-1/4	25
107-082	3-1/2	25
107-086	4	25
107-088	4-1/2	25
107-090	5	25
107-092	5-1/2	25
107-094	6	25

3/8-16 DIAMETER

USS	LGTH	QTY
107-108	1/2	100
107-110	3/4	100
107-112	1	100
107-114	1-1/4	100
107-116	1-1/2	100
107-118	1-3/4	100
107-120	2	100
107-122	2-1/4	50
107-124	2-1/2	50
107-126	2-3/4	50
107-128	3	50
107-130	3-1/4	25
107-132	3-1/2	25
107-136	4	25
107-138	4-1/2	25
107-140	5	25
107-142	5-1/2	25
107-144	6	25
107-146	6-1/2	25
107-148	7	25
107-150	7-1/2	25
107-152	8	10
107-1558	10	10

7/16-14 DIAMETER

USS	LGTH	QTY
107-160	3/4	50
107-162	1	50
107-164	1-1/4	50
107-166	1-1/2	50
107-168	1-3/4	25
107-170	2	25
107-172	2-1/4	25
107-174	2-1/2	25
107-176	2-3/4	25
107-178	3	25
107-180	3-1/4	25
107-182	3-1/2	25
107-186	4	25
107-188	4-1/2	25
107-190	5	25
107-192	5-1/2	25
107-194	6	25
107-196	6-1/2	25
107-198	7	10
107-202	8	10



1/2-13 DIAMETER

USS	LGTH	QTY
107-210	3/4	50
107-212	1	50
107-214	1-1/4	50
107-216	1-1/2	50
107-218	1-3/4	50
107-220	2	50
107-222	2-1/4	25
107-224	2-1/2	25
107-226	2-3/4	25
107-228	3	25
107-230	3-1/4	25
107-232	3-1/2	25
107-234	3-3/4	15
107-236	4	15
107-237	4-1/4	15
107-238	4-1/2	15
107-7239	4-3/4	15
107-240	5	15
107-242	5-1/2	15
107-244	6	15
107-246	6-1/2	15
107-248	7	15
107-250	7-1/2	15
107-252	8	15
107-253	8-1/2	15
107-254	9	15

9/16-12 DIAMETER

USS	LGTH	QTY
107-262	1	15
107-264	1-1/4	15
107-266	1-1/2	15
107-268	1-3/4	15
107-270	2	15
107-272	2-1/4	15
107-274	2-1/2	15
107-276	2-3/4	15
107-278	3	15
107-282	3-1/2	10
107-286	4	10
107-288	4-1/2	10
107-290	5	10
107-292	5-1/2	10
107-294	6	10
107-296	6-1/2	10
107-298	7	10

5/8-11 DIAMETER

USS	LGTH	QTY
107-312	1	15
107-314	1-1/4	15
107-316	1-1/2	15
107-318	1-3/4	15
107-320	2	15
107-322	2-1/4	15
107-324	2-1/2	15
107-326	2-3/4	15
107-328	3	15
107-330	3-1/4	10
107-332	3-1/2	10
107-336	4	10
107-338	4-1/2	10
107-340	5	10
107-342	5-1/2	10
107-344	6	10
107-346	6-1/2	10
107-348	7	10
107-350	7-1/2	10
107-352	8	10
107-353	8-1/2	10
107-354	9	10
107-355	9-1/2	10
107-356	10	10

3/4-10 DIAMETER

USS	LGTH	QTY
107-362	1	15
107-364	1-1/4	15
107-366	1-1/2	15
107-368	1-3/4	15
107-370	2	15
107-372	2-1/4	15
107-374	2-1/2	15
107-376	2-3/4	10
107-378	3	10
107-380	3-1/4	10
107-382	3-1/2	10
107-386	4	10
107-388	4-1/2	10
107-390	5	10
107-392	5-1/2	10
107-394	6	10
107-396	6-1/2	10
107-398	7	10
107-402	8	10
107-404	9	10
107-406	10	10



7/8-9 DIAMETER

USS	LGTH	QTY
107-416	1-1/2	5
107-418	1-3/4	5
107-420	2	5
107-422	2-1/4	5
107-424	2-1/2	5
107-426	2-3/4	5
107-428	3	5
107-430	3-1/4	5
107-432	3-1/2	5
107-436	4	5
107-438	4-1/2	5
107-440	5	5
107-442	5-1/2	5
107-444	6	5
107-446	6-1/2	5
107-448	7	5
107-450	7-1/2	5
107-452	8	5
107-453	8-1/2	5
107-454	9	5
107-455	9-1/2	5
107-456	10	5

1-8 DIAMETER

USS	LGTH	QTY
107-470	2	5
107-472	2-1/4	5
107-474	2-1/2	5
107-478	3	5
107-482	3-1/2	5
107-486	4	5
107-488	4-1/2	5
107-490	5	5
107-492	5-1/2	5
107-494	6	5
107-496	6-1/2	5
107-498	7	5
107-500	7-1/2	5
107-502	8	5
107-503	9	5
107-504	10	5



1-1/8-7 DIAMETER

USS	LGTH	QTY
107-5043	3	EA
107-5044	4	EA
107-5045	5	EA
107-5046	6	EA
107-5047	7	EA
107-5048	8	EA

1-1/2-6 DIAMETER

USS	LGTH	QTY
107-5060	10	EA



1/4-28 DIAMETER

USS	LGTH	QTY
107-506	1/2	50
107-508	5/8	50
107-510	3/4	50
107-512	1	50
107-514	1-1/4	50
107-516	1-1/2	50
107-518	1-3/4	50
107-520	2	50
107-522	2-1/4	25
107-524	2-1/2	25
107-526	2-3/4	25
107-528	3	25
107-530	3-1/4	25
107-532	3-1/2	25
107-536	4	25
107-538	4-1/2	25
107-540	5	25
107-544	5-1/2	25
107-544	6	25

5/16-24 DIAMETER

USS	LGTH	QTY
107-556	1/2	50
107-558	5/8	50
107-560	3/4	50
107-562	1	50
107-564	1-1/4	50
107-566	1-1/2	50
107-568	1-3/4	50
107-570	2	50
107-572	2-1/4	25
107-574	2-1/2	25
107-576	2-3/4	25
107-578	3	25
107-580	3-1/4	25
107-582	3-1/2	25
107-586	4	25
107-588	4-1/2	25
107-590	5	25
107-592	5-1/2	25
107-594	6	25

3/8-24 DIAMETER

USS	LGTH	QTY
107-606	1/2	50
107-608	5/8	50
107-610	3/4	50
107-612	1	50
107-614	1-1/4	50
107-616	1-1/2	50
107-618	1-3/4	25
107-620	2	25
107-622	2-1/4	25
107-624	2-1/2	25
107-626	2-3/4	25
107-628	3	25
107-630	3-1/4	25
107-632	3-1/2	25
107-636	4	25
107-638	4-1/2	25
107-640	5	25
107-642	5-1/2	25
107-644	6	25

7/16-20 DIAMETER

USS	LGTH	QTY
107-660	3/4	25
107-662	1	25
107-664	1-1/4	25
107-666	1-1/2	25
107-668	1-3/4	25
107-670	2	25
107-672	2-1/4	25
107-674	2-1/2	25
107-676	2-3/4	25
107-678	3	25
107-680	3-1/4	25
107-682	3-1/2	25
107-684	3-3/4	15
107-686	4	15
107-688	4-1/2	15
107-690	5	15
107-692	5-1/2	15
107-694	6	15



1/2-20 DIAMETER

USS	LGTH	QTY
107-710	3/4	25
107-712	1	25
107-714	1-1/4	25
107-716	1-1/2	25
107-718	1-3/4	25
107-720	2	25
107-722	2-1/4	25
107-724	2-1/2	25
107-726	2-3/4	25
107-728	3	25
107-730	3-1/4	25
107-732	3-1/2	25
107-734	3-3/4	15
107-736	4	15
107-738	4-1/2	15
107-740	5	15
107-742	5-1/2	15
107-744	6	15
107-746	6-1/2	15
107-748	7	15
107-752	8	15

9/16-18 DIAMETER

USS	LGTH	QTY
107-762	1	15
107-764	1-1/4	15
107-766	1-1/2	15
107-768	1-3/4	15
107-770	2	15
107-772	2-1/4	15
107-774	2-1/2	15
107-776	2-3/4	15
107-778	3	15
107-782	3-1/2	10
107-786	4	10
107-788	4-1/2	10
107-790	5	10

5/8-18 DIAMETER

USS	LGTH	QTY
107-812	1	15
107-814	1-1/4	15
107-816	1-1/2	15
107-818	1-3/4	15
107-820	2	15
107-822	2-1/4	15
107-824	2-1/2	15
107-826	2-3/4	15
107-828	3	15
107-830	3-1/4	10
107-832	3-1/2	10
107-836	4	10
107-838	4-1/2	10
107-840	5	10
107-842	5-1/2	10
107-844	6	10
107-846	6-1/2	10
107-848	7	10
107-850	7-1/2	10
107-852	8	10

3/4-16 DIAMETER

USS	LGTH	QTY
107-862	1	15
107-864	1-1/4	15
107-866	1-1/2	15
107-868	1-3/4	15
107-870	2	15
107-872	2-1/4	15
107-874	2-1/2	15
107-876	2-3/4	10
107-878	3	10
107-880	3-1/4	10
107-882	3-1/2	10
107-886	4	10
107-888	4-1/2	10
107-890	5	10
107-892	5-1/2	10
107-894	6	10
107-896	6-1/2	10
107-898	7	10
107-900	7-1/2	10
107-902	8	5

**7/8-14 DIAMETER****1-14 DIAMETER**

USS	LGTH	QTY
107-916	1-1/2	5
107-918	1-3/4	5
107-920	2	5
107-922	2-1/4	5
107-924	2-1/2	5
107-926	2-3/4	5
107-928	3	5
107-930	3-1/4	5
107-932	3-1/2	5
107-934	3-3/4	5
107-936	4	5
107-938	4-1/2	5
107-940	5	5
107-942	5-1/2	5
107-944	6	5
107-946	6-1/2	5
107-948	7	5
107-950	7-1/2	5
107-952	8	5

USS	LGTH	QTY
107-966	1-1/2	5
107-970	2	5
107-974	2-1/2	5
107-978	3	5
107-982	3-1/2	5
107-986	4	5
107-988	4-1/2	5
107-990	5	5
107-992	5-1/2	5
107-994	6	5
107-996	6-1/2	5
107-998	7	5
108-502	8	5
108-004	9	5
108-006	10	5



HEX NUTS GRADE 5 PLATED



GRADE 5 USS NUTS

Part#	SIZE	QTY
118-200	1/4-20	100
118-201	5/16-18	100
118-202	3/8-16	100
118-203	7/16-14	50
118-205	1/2-13	50
118-206	9/16-12	25
118-207	5/8-11	25
118-208	3/4-10	20
118-209	7/8-11	15
118-210	1-8	10
118-211	1-1/8-7	5
118-212	1-1/4-6	5
118-213	1-3/8-6	5
118-217	1-1/2-6	3

GRADE 5 SAE NUTS

Part#	SIZE	QTY
118-220	1/4-28	100
118-221	5/16-24	100
118-222	3/8-24	100
118-223	7/16-20	50
118-225	1/2-20	50
118-226	9/16-18	25
118-227	5/8-18	25
118-228	3/4-16	20
118-229	7/8-14	15
118-230	1-14	10
118-231	1-1/8-12	5
118-232	1-1/4-12	5
118-233	1-3/8-12	5
118-237	1-1/2-12	3

HEX NUTS GRADE 8 PLATED



GRADE 8 USS NUTS

Part#	SIZE	QTY
118-240	1/4-20	100
118-241	5/16-18	100
118-242	3/8-16	100
118-243	7/16-14	50
118-244	1/2-13	50
118-245	9/16-12	25
118-246	5/8-11	25
118-247	3/4-10	20
118-248	7/8-11	15
118-249	1-8	10
118-250	1-1/8-7	5
118-251	1-1/4-6	5
118-352	1-3/8-6	4
118-353	1-1/2-6	3
118-258	2-4-1/2	EA

GRADE 8 SAE NUTS

Part#	SIZE	QTY
118-260	1/4-28	100
118-261	5/16-24	100
118-262	3/8-24	100
118-263	7/16-20	50
118-264	1/2-20	25
118-265	9/16-18	25
118-266	5/8-18	25
118-267	3/4-16	20
118-268	7/8-14	15
118-269	1-14	10
118-270	1-1/8-12	5
118-271	1-1/4-12	5
118-272	1-3/8-12	5
118-373	1-1/2-12	3

GRADE 5 NYLON LOCKNUTS



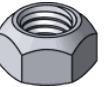
USS NYLON NUTS

Part#	SIZE	QTY
121-120	6-32	100
121-125	10-24	100
121-137	12-24	50
118-310	1/4-20	100
118-311	5/16-18	100
118-312	3/8-16	50
118-313	7/16-14	25
118-314	1/2-13	25
118-315	9/16-12	25
118-316	5/8-11	25
118-317	3/4-10	20
118-318	7/8-11	15
118-319	1-8	10

SAE NYLON NUTS

Part#	SIZE	QTY
121-122	8-32	100
121-135	10-32	100
118-320	1/4-28	100
118-321	5/16-24	100
118-322	3/8-24	50
118-323	7/16-20	25
118-324	1/2-20	25
118-325	9/16-18	25
118-326	5/8-18	25
118-327	3/4-16	20
118-328	7/8-14	15
118-329	1-14	10

STOVER LOCKNUTS



USS STOVER NUTS

Part#	SIZE	QTY
118-330	1/4-20	100
118-331	5/16-18	100
118-332	3/8-16	50
118-333	7/16-14	25
118-334	1/2-13	25
118-335	9/16-12	25
118-336	5/8-11	25
118-337	3/4-10	20
118-338	7/8-11	15
118-339	1-8	10
118-3392	1-1/8-7	5

SAE STOVER NUTS

Part#	SIZE	QTY
118-340	1/4-28	100
118-341	5/16-24	100
118-342	3/8-24	50
118-343	7/16-20	25
118-344	1/2-20	25
118-345	9/16-18	25
118-346	5/8-18	25
118-347	3/4-16	20
118-348	7/8-14	15
118-349	1-14	10

GRADE 5 THIN NYLON LOCKNUTS



USS NYLON THIN NUTS

Part#	SIZE	QTY
118-289	1/4-20	50
118-290	5/16-18	50
118-291	3/8-16	50
118-292	7/16-14	50
118-293	1/2-13	25
118-294	9/16-12	25

USS NYLON THIN NUTS

Part#	SIZE	QTY
118-298	1/4-28	50
118-299	5/16-24	50
118-300	3/8-24	50
118-301	7/16-20	50
118-302	1/2-20	25
118-303	9/16-18	25

GRADE 5 / 8 LOCK WASHERS



GRADE 5 LOCKS

Part#	SIZE	QTY
118-404	1/4	200
118-405	5/16	200
118-406	3/8	100
118-407	7/16	100
118-408	1/2	100
118-409	9/16	100
118-410	5/8	50
118-411	3/4	50
118-412	7/8	25
118-413	1	25
118-414	1-1/8	5
118-415	1-1/4	5

GRADE 8 LOCKS

Part#	SIZE	QTY
118-504	1/4	200
118-505	5/16	200
118-506	3/8	100
118-507	7/16	50
118-508	1/2	50
118-509	9/16	50
118-510	5/8	50
118-511	3/4	25
118-512	7/8	25
118-513	1	25
118-514	1-1/8	5
118-515	1-1/4	5
118-517	1-1/2	5

GRADE 8 FLAT WASHERS



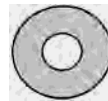
USS GD 8 FLATS

Part#	SIZE	QTY
118-524	1/4	100
118-525	5/16	100
118-526	3/8	100
118-527	7/16	50
118-528	1/2	50
118-529	9/16	25
118-530	5/8	25
118-531	3/4	20
118-532	7/8	15
118-533	1	10
118-534	1-1/8	10
118-535	1-1/4	5
118-536	1-3/8	5
118-537	1-1/2	5

SAE GD 8 FLATS

Part#	SIZE	QTY
118-544	1/4	200
118-545	5/16	150
118-546	3/8	100
118-547	7/16	50
118-548	1/2	50
118-549	9/16	25
118-550	5/8	25
118-551	3/4	20
118-552	7/8	15
118-553	1	10
118-554	1-1/8	10
118-555	1-1/4	10
118-556	1-1/2	10

GRADE 5 FLAT WASHERS



USS GD 5 FLATS

Part#	SIZE	QTY
118-421	1/4	150
118-422	5/16	100
118-423	3/8	100
118-424	7/16	100
118-425	1/2	50
118-426	9/16	50
118-427	5/8	25
118-428	3/4	25
118-429	7/8	20
118-430	1	10
118-431	1-1/8	10
118-432	1-1/4	10
118-433	1-1/2	10

SAE GD 5 FLATS

Part#	SIZE	QTY
118-441	1/4	250
118-442	5/16	200
118-443	3/8	100
118-444	7/16	100
118-445	1/2	50
118-446	9/16	50
118-447	5/8	25
118-448	3/4	25
118-449	7/8	20
118-450	1	10
118-451	1-1/8	10
118-471	1-1/4	10

L-9 SAE FLAT WASHERS



HEAVY DUTY USS NT2 FLATS

Part#	SIZE	QTY
118-624	1/4	100
118-625	5/16	100
118-626	3/8	100
118-627	7/16	100
118-628	1/2	50
118-629	9/16	25
118-630	5/8	25
118-631	3/4	20
118-632	7/8	15

EXTRA THICK SAE NT2 FLATS

Part#	SIZE	QTY
118-644	1/4	100
118-645	5/16	100
118-646	3/8	100
118-647	7/16	50
118-648	1/2	50
118-649	9/16	25
118-650	5/8	25
118-651	3/4	20
118-652	7/8	15

EXTRA THICK SAE NTX FLATS

Part#	SIZE	QTY
118-744	1/4	50
118-745	5/16	50
118-746	3/8	50
118-747	7/16	25
118-748	1/2	25
118-749	9/16	25
118-750	5/8	25
118-751	3/4	20
118-752	7/8	15

18 GA MACHINERY BUSHINGS

Part#	SIZE	QTY
119-028	1 X 5/8	25
119-030	1-1/4 X 3/4	25
119-032	1-3/8 X 7/8	25



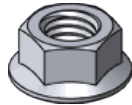
14 GA MACHINERY BUSHINGS

Part#	SIZE	QTY
119-058	1-3/8 X 7/8	25
119-060	1-1/2 X 1	25
119-062	1-3/4 X 1-1/8	25
119-064	1-7/8 X 1-1/4	25
119-066	2-1/4 X 1-1/2	25
119-068	2-1/2 X 1-3/4	10
119-070	2-1/8 X 1-3/8	10
119-072	2-1/4 X 1-1/2	10
119-076	2-1/2 X 1-3/4	10
119-078	2-7/8 X 1-7/8	10
119-080	3 X 2	10

10 GA MACHINERY BUSHINGS

Part#	SIZE	QTY
119-124	1-3/8 X 7/8	25
119-126	1-1/2 X 1	25
119-128	1-3/4 X 1-1/8	25
119-130	1-7/8 X 1-1/4	25
119-134	2-1/4 X 1-1/2	10
119-138	2-1/2 X 1-3/4	10

SERRATED FLANGE NUTS



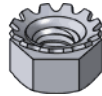
USS FLANGE NUTS

Part#	SIZE	QTY
120-116	10-24	100
120-118	1/4-20	50
120-120	5/16-18	50
120-122	3/8-16	50
120-123	7/16-14	25
120-124	1/2-13	25

SAE FLANGE NUTS

Part#	SIZE	QTY
120-158	8-32	100
120-160	1/4-28	50
120-161	5/16-24	50
120-162	3/8-24	50
120-163	7/16-20	25
120-164	1/2-20	25

KEEP NUTS



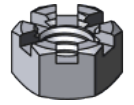
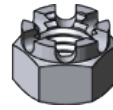
USS KEEP NUTS

Part#	SIZE	QTY
120-212	10-24	100
120-216	12-24	100
120-218	1/4-20	100
120-220	5/16-18	50
120-222	3/8-16	50

SAE KEEP NUTS

Part#	SIZE	QTY
120-208	6-32	100
120-210	8-32	100
120-214	10-32	100
120-260	1/4-28	100
120-261	5/16-24	50
120-262	3/8-16	50

CASTLE / SLOTTED NUTS



GRADE 2 CASTLE NUTS

Part#	SIZE	QTY
120-305	5/16-18	20
120-306	3/8-16	20
120-307	7/16-14	20
120-308	1/2-13	20
120-309	9/16-12	10
120-310	5/8-11	10
120-311	3/4-10	10
120-312	7/8-9	10
120-313	1-8	10
120-314	1-1/8-7	5
120-315	1-1/4-7	5
120-324	1/4-28	20
120-325	5/16-24	20
120-326	3/8-24	20
120-327	7/16-20	20
120-328	1/2-20	20
120-329	9/16-18	10
120-330	5/8-18	10
120-331	3/4-16	10
120-332	7/8-14	10
120-333	1-14	10
120-334	1-1/8-12	5
120-335	1-1/4-12	5

GRADE 2 SLOTTED NUTS

Part#	SIZE	QTY
120-354	1/4-20	20
120-355	5/16-18	20
120-356	3/8-16	20
120-357	7/16-14	20
120-358	1/2-13	20
120-359	9/16-12	10
120-360	5/8-11	10
120-361	3/4-10	10
120-362	7/8-9	10
120-363	1-8	10
120-364	1-1/8-7	5
120-365	1-1/4-7	5
120-376	3/8-24	20
120-377	7/16-20	20
120-378	1/2-20	20
120-379	9/16-18	10
120-380	5/8-18	10
120-381	3/4-16	10
120-382	7/8-14	10
120-383	1-14	10
120-384	1-1/8-12	5
120-385	1-1/4-12	5

WING / COUPLING NUTS



WING NUTS

Part#	SIZE	QTY
120-554	6-32	50
120-556	8-32	50
120-558	10-32	50
120-560	10-24	50
120-561	12-24	50
120-563	1/4-20	50
120-564	5/16-18	50
120-565	3/8-16	25
120-567	1/2-13	25

ROD COUPLING NUTS

Part#	SIZE	QTY
119-549	1/4-20	10
119-550	5/16-18	10
119-551	3/8-16	10
119-553	1/2-13	5
119-555	5/8-11	5
119-556	3/4-10	5
119-558	7/8-9	5

MACHINE SCREW HEX NUTS



USS MACHINE NUTS

Part#	SIZE	QTY
121-012	10-24	100
121-016	12-24	100
121-018	1/4-20	100
121-019	5/16-18	50
121-020	3/8-16	50
121-021	7/16-14	50
121-022	1/2-13	25
121-023	9/16-12	20
121-024	5/8-11	20
121-025	3/4-10	20
121-026	7/8-9	10
121-027	1-8	10
121-030	1-1/4-7	5

SAE MACHINE NUTS

Part#	SIZE	QTY
121-000	2-56	100
121-002	4-36	100
121-004	4-40	100
121-006	5-40	100
121-008	6-32	100
121-010	8-32	100
121-014	10-32	100
121-016	12-24	100
121-050	1/4-28	100
121-051	5/16-24	50
121-052	3/8-24	50
121-053	7/16-20	50
121-054	1/2-20	25
121-055	9/16-18	20
121-056	5/8-18	20
121-057	3/4-16	20
121-058	7/8-14	10
121-059	1-14	10
121-060	1-1/8-12	10
121-061	1-1/4-12	5
121-062	1-1/2-12	5

MACHINE NYLON NUTS



Part#	SIZE	QTY
121-120	6-32	100
121-122	8-32	100
121-125	10-24	100
121-135	10-32	100
121-137	12-24	50

SQUARE MACH NUT

Part#	SIZE	QTY
121-165	10-24	50
121-169	1/4-20	50



MACHINE FLATS / LOCKS



MACHINE FLATS

Part#	SIZE	QTY
121-204	#6	200
121-205	#8	200
121-206	#10	200
121-207	#12	100
121-208	#14	100

MACHINE LOCKS

Part#	SIZE	QTY
121-324	#6	200
121-325	#8	200
121-326	#10	200
121-327	#12	100
121-328	1/4	100

INTERNAL / EXTERNAL LOCKS



EXTERNAL LOCKS

Part#	SIZE	QTY
121-451	#6	100
121-452	#8	100
121-453	#10	100
121-454	#12	100
121-455	#14	100
121-456	5/16	100
121-457	3/8	50
121-458	7/16	50
121-459	1/2	50
121-460	9/16	25
121-461	5/8	25
121-462	3/4	25

INTERNAL LOCKS

Part#	SIZE	QTY
121-571	#6	100
121-572	#8	100
121-573	#10	100
121-574	#12	100
121-575	#14	100
121-576	5/16	100
121-577	3/8	50
121-578	7/16	50
121-579	1/2	50
121-580	9/16	25
121-581	5/8	25
121-582	3/4	25

COUNTER SUNK FLAT WASHERS



EXT COUNTER SUNK

Part#	SIZE	QTY
121-619	#6	100
121-620	#8	100
121-622	#10	100
121-624	#14	100

COUNTER SUNK FLAT WASHERS



COUNTER FLAT WASHERS

Part #	SIZE	QTY
121-673	#8	100
121-674	#10	100
121-675	#12	100

FLUSH FLAT WASHERS

Part #	SIZE	QTY
121-689	#6	100
121-690	#8	100
121-691	#10	100

FENDER WASHERS



FENDER WASHERS

Part #	SIZE	QTY
121-804	3/16 X 3/4	100
121-806	3/16 X 1	100
121-808	1/4 X 1	100
121-810	1/4 X 1-1/4	100
121-812	1/4 X 1-1/2	50
121-814	1/4 X 2	50
121-818	5/16 X 1-1/4	50
121-820	5/16 X 1-1/2	50
121-822	5/16 X 2	50
121-823	3/8 X 1-1/4	50
121-824	3/8 X 1-1/2	50
121-826	3/8 X 2	50
121-830	1/2 X 2	50

H/D FENDER WASHERS

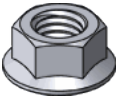
Part #	SIZE	QTY
121-848	3/16 X 1	50
121-850	3/16 X 1-1/4	50
121-853	1/4 X 1	50
121-854	1/4 X 1-1/4	25
121-855	1/4 X 1-1/2	25
121-858	5/16 X 1-1/4	25
121-859	5/16 X 1-1/2	25
121-860	3/8 X 1-1/4	25
121-862	3/8 X 1-1/2	25
121-866	1/2 X 2	25



RUBBER/GALV FLAT WASHERS

Part #	SIZE	QTY
121-920	1/4 x 1-1/2	25
121-928	5/16 x 3/4	25
1210936	3/8 x 1-1/8	25

STOVER FLANGE NUTS



USS FLANGE NUTS

Part #	SIZE	QTY
122-013	3/8-16	50
122-015	1/2-13	25
122-017	5/8-11	25
122-018	3/4-10	20

SAE FLANGE NUTS

Part #	SIZE	QTY
122-155	1/2-20	25
122-157	5/8-18	25
122-158	3/4-16	20
122-160	7/8-14	10

FLANGE BOLTS



USS FRAME BOLTS

Part #	SIZE	QTY
122-170	3/8-16 X 1	25
122-172	3/8-16 X 1-1/4	25
122-174	3/8-16 X 1-1/2	25
122-176	3/8-16 X 1-3/4	25
122-202	1/2-13 X 1-1/4	25
122-204	1/2-13 X 1-1/2	25
122-206	1/2-13 X 1-3/4	25
122-208	1/2-13 X 2	15
122-209	1/2-13 X 2-1/4	15
122-210	1/2-13 X 2-1/2	15
122-211	1/2-13 X 2-3/4	15
122-212	1/2-13 X 3	15
122-213	1/2-13 X 3-1/4	15
122-214	1/2-13 X 3-1/2	15
122-250	5/8-11 X 1-1/2	10
122-252	5/8-11 X 1-3/4	10
122-254	5/8-11 X 2	10
122-256	5/8-11 X 2-1/4	10
122-260	5/8-11 X 2-1/2	10
122-264	5/8-11 X 3	10
122-266	5/8-11 X 3-1/4	10
122-267	5/8-11 X 3-1/2	10
122-268	5/8-11 X 3-3/4	10
122-269	5/8-11 X 4	10
122-272	5/8-11 X 4-1/2	10
122-280	5/8-11 X 5	10
122-282	5/8-11 X 5-1/2	10
122-314	3/4-10 X 1-1/2	10
122-315	3/4-10 X 1-3/4	10
122-316	3/4-10 X 2	10
122-318	3/4-10 X 2-1/4	10
122-320	3/4-10 X 2-1/2	10
122-322	3/4-10 X 2-3/4	10
122-324	3/4-10 X 3	10
122-325	3/4-10 X 3-1/4	10
122-326	3/4-10 X 3-1/2	10

SAE FRAME BOLTS

Part #	SIZE	QTY
122-472	1/2-20 X 1-1/2	25
122-473	1/2-20 X 1-3/4	25
122-474	1/2-20 X 2	15
122-476	1/2-20 X 2-1/2	15
122-492	5/8-18 X 1-1/2	10
122-493	5/8-18 X 1-3/4	10
122-494	5/8-18 X 2	10
122-495	5/8-18 X 2-1/4	10
122-496	5/8-18 X 2-1/2	10
122-497	5/8-18 X 2-3/4	10
122-498	5/8-18 X 3	10
122-500	5/8-18 X 3-1/2	10
122-502	5/8-18 X 4	10
122-504	5/8-18 X 4-1/2	10
122-555	3/4-16 X 1-3/4	10
122-556	3/4-16 X 2	10
122-557	3/4-16 X 2-1/4	10
122-560	3/4-16 X 2-1/2	10
122-561	3/4-16 X 2-3/4	10
122-564	3/4-16 X 3	10

ELEVATOR BOLTS ZINC



ELEVATOR BOLTS

Part #	SIZE	QTY
123-500	1/4-20 X 3/4	100
123-501	1/4-20 X 1	100
123-502	1/4-20 X 1-1/4	100
123-504	1/4-20 X 1-1/2	100
123-505	1/4-20 X 1-3/4	100
123-506	1/4-20 X 2	100
123-508	1/4-20 X 2-1/2	50
123-522	5/16 X 3/4	50
123-523	5/16-18 X 1	50
123-524	5/16 X 1-1/4	50
123-525	5/16-18 X 1-1/2	50
123-526	5/16-18 X 2	50
123-529	5/16-18 X 2-1/2	50
123-531	5/16-18 X 3	50
123-554	3/8-16 X 1-1/4	50
123-555	3/8-16 X 1-1/2	50
123-557	3/8-16 X 2	50
123-559	3/8-16 X 2-1/2	50
123-561	3/8-16 X 3	50

TAP BOLTS



FULLY THREADED TAP BOLTS GRADE 5

Part #	SIZE	QTY
123-660	1/4-20 X 2	50
123-690	5/16-18 X 2	50
123-720	3/8-16 X 2	50
123-722	3/8-16 X 2-1/2	50
123-725	3/8-16 X 3	50

GD-2 3' ALL THREAD



USS ALL 3' THREAD

Part #	SIZE	QTY
124-160	10-24	EA
124-166	1/4-20	EA
124-167	5/16-18	EA
124-168	3/8-16	EA
124-169	7/16-14	EA
124-170	1/2-13	EA
124-171	9/16-12	EA
124-172	5/8-11	EA
124-173	3/4-10	EA
124-174	7/8-9	EA
124-175	1-8	EA

SAE ALL 3' THREAD

Part #	SIZE	QTY
124-161	10-32	EA
124-182	1/4-28	EA
124-183	5/16-24	EA
124-184	3/8-24	EA
124-185	7/16-20	EA
124-186	1/2-20	EA
124-187	9/16-18	EA
124-188	5/8-18	EA
124-189	3/4-16	EA
124-190	7/8-14	EA
124-191	1-14	EA

B-7 3' ALL THREAD



USS ALL 3' THREAD

Part #	SIZE	QTY
124-847	1/4-20	EA
124-848	5/16-18	EA
124-849	3/8-16	EA
124-850	7/16-14	EA
124-851	1/2-13	EA
124-852	9/16-12	EA
124-853	5/8-11	EA
124-854	3/4-10	EA
124-855	7/8-9	EA
124-856	1-8	EA

SAE ALL 3' THREAD

Part #	SIZE	QTY
124-872	1/4-28	EA
124-873	5/16-24	EA
124-874	3/8-24	EA
124-875	7/16-20	EA
124-876	1/2-20	EA
124-878	5/8-18	EA
124-879	3/4-16	EA
124-880	7/8-14	EA
124-881	1-14	EA

GD-2 6' ALL THREAD



USS ALL 6' THREAD

Part #	SIZE	QTY
124-360	8-32	EA
124-362	10-24	EA
124-364	12-24	EA
124-366	1/4-20	EA
124-367	5/16-18	EA
124-368	3/8-16	EA
124-369	7/16-14	EA
124-370	1/2-13	EA
124-371	9/16-12	EA
124-372	5/8-11	EA
124-373	3/4-10	EA
124-374	7/8-9	EA
124-375	1-8	EA

SAE ALL 6' THREAD

Part #	SIZE	QTY
124-380	10-32	EA
124-382	1/4-28	EA
124-383	5/16-24	EA
124-384	3/8-24	EA
124-385	7/16-20	EA
124-386	1/2-20	EA
124-387	9/16-18	EA
124-388	5/8-18	EA
124-389	3/4-16	EA
124-390	7/8-14	EA
124-391	1-14	EA

B-7 6' ALL THREAD



USS ALL 6' THREAD

Part #	SIZE	QTY
124-073	1/4-20	EA
124-074	5/16-18	EA
124-075	3/8-16	EA
124-076	7/16-14	EA
124-077	1/2-13	EA
124-078	9/16-12	EA
124-079	5/8-11	EA
124-080	3/4-10	EA

SAE ALL 6' THREAD

Part #	SIZE	QTY
124-087	1/4-28	EA
124-088	5/16-24	EA
124-089	3/8-24	EA
124-090	7/16-20	EA
124-091	1/2-20	EA
124-092	9/16-18	EA
124-093	5/8-18	EA
124-094	3/4-16	EA
124-095	7/8-14	EA
124-096	1-14	EA

3' ALL THREAD



METRIC ALL THREAD

Part #	SIZE	QTY
124-890	5 X .80	EA
124-892	6 X 1.00	EA
124-894	8 X 1.25	EA
124-900	10 X 1.50	EA
124-906	12 X 1.75	EA
124-912	14 X 2.00	EA
124-918	16 X 2.00	EA
124-924	18 X 2.50	EA
124-925	20 X 2.50	EA
124-926	22 X 2.50	EA
124-927	24 X 3.00	EA

WATER HARDNED DRILL ROD

USS ALL 3' THREAD

Part #	SIZE	QTY
124-943	1/8	EA
124-945	3/16	EA
124-947	1/4	EA
124-948	5/16	EA
124-949	3/8	EA
124-950	7/16	EA
124-951	1/2	EA
124-953	5/8	EA
124-954	3/4	EA
124-956	1	EA

STAINLESS NUTS



STAINLESS NUTS

Part #	SIZE	QTY
125-002	6-32	100
125-003	8-32	100
125-004	10-24	100
125-005	10-32	100
125-006	1/4-20	50
125-007	5/16-18	50
125-008	3/8-16	50
125-010	1/2-13	25
125-012	5/8-11	25
125-013	3/4-10	25

Part #	SIZE	QTY
125-014	1/4-28	50
125-015	5/16-24	50
125-016	3/8-24	50



STAINLESS NYLON NUTS

Part #	SIZE	QTY
125-017	6-32	100
125-018	8-32	100
125-019	10-24	100
125-020	10-32	100
125-021	1/4-20	50
125-022	5/16-18	50
125-023	3/8-16	50
125-025	1/2-13	25
125-027	5/8-11	25



STAINLESS ACORN NUTS

Part #	SIZE	QTY
125-030	1/4-20	25
125-031	5/16-18	25
125-032	3/8-16	25

STAINLESS FLATS / LOCKS



STAINLESS SAE FLATS

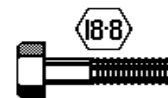
Part #	SIZE	QTY
125-034	6	100
125-035	8	100
125-036	10	100
125-040	1/4	100
125-041	5/16	100
125-042	3/8	50
125-044	1/2	50
125-046	5/8	25



STAINLESS SAE FLATS

Part #	SIZE	QTY
125-056	6	200
125-057	8	200
125-058	10	200
125-060	1/4	100
125-061	5/16	100
125-062	3/8	50
125-064	1/2	50
125-066	5/8	25

STAINLESS BOLTS



1/4-20 DIAMETER

Part #	LGTH	QTY
125-071	1/2	50
125-072	5/8	50
125-073	3/4	50
125-074	1	50
125-075	1-1/4	50
125-076	1-1/2	50
125-077	1-3/4	25
125-078	2	25
125-080	2-1/2	25
125-082	3	25
125-084	3-1/2	25
125-086	4	25
125-090	6	25

5/16-18 DIAMETER

Part #	LGTH	QTY
125-094	1/2	50
125-096	3/4	50
125-097	1	50
125-098	1-1/4	50
125-099	1-1/2	50
125-101	2	25
125-103	2-1/2	25
125-104	2-3/4	25
125-105	3	25
125-107	3-1/2	25
125-109	4	25

3/8-16 DIAMETER

Part #	LGTH	QTY
125-113	1/2	50
125-115	3/4	50
125-116	1	50
125-117	1-1/4	50
125-118	1-1/2	50
125-120	2	25
125-122	2-1/2	25
125-124	3	25
125-126	3-1/2	25
125-128	4	25

1/2-13 DIAMETER

Part #	LGTH	QTY
125-140	1/2	25
125-142	3/4	25
125-144	1	25
125-145	1-1/4	25
125-146	1-1/2	25
125-148	2	25
125-150	2-1/2	25
125-152	3	25
125-154	3-1/2	25
125-156	4	25

5/8-11 DIAMETER

Part #	LGTH	QTY
125-178	1-1/2	10
125-180	2	10
125-182	2-1/2	10
125-184	3	10
125-186	3-1/2	10
125-188	4	10

STAINLESS CARRIAGE BOLTS



Part #	LGTH	QTY
125-323	1/4-20 X 1/2	25
125-324	1/4-20 X 5/8	25
125-325	1/4-20 X 3/4	25
125-327	1/4-20 X 1	25
125-348	5/16-18 X 1	25

STAINLESS SOCKET HEAD BOLTS



Part #	SIZE	QTY
125-504	1/4-20 X 3/4	25
125-506	1/4-20 X 1	25
125-508	1/4-20 X 1-1/4	25
125-510	1/4-20 X 1-1/2	25
125-530	5/16-18 X 1	25
125-531	5/16-18 X 1-1/4	25
125-532	5/16-18 X 1-1/2	25
125-533	5/16-18 X 1-3/4	25
125-534	5/16-18 X 2	25

Part #	SIZE	QTY
125-748	8 X 1.25 X 20	50
125-750	8 X 1.25 X 35	50
125-760	10 X 1.50 X 20	50

Part #	SIZE	QTY
125-562	3/8-16 X 5/8	25
125-563	3/8-16 X 3/4	25
125-565	3/8-16 X 1	25
125-566	3/8-16 X 1-1/4	25
125-567	3/8-16 X 1-1/2	25
125-568	3/8-16 X 1-3/4	25
125-570	3/8-16 X 2	25
125-571	3/8-16 X 2-1/4	25
125-572	3/8-16 X 2-1/2	25
125-585	1/2-13 X 3/4	25
125-586	1/2-13 X 1	25
125-587	1/2-13 X 1-1/4	25
125-588	1/2-13 X 1-1/2	25
125-589	1/2-13 X 1-3/4	25
125-590	1/2-13 X 2	25

STAINLESS FLAT SOCKET HEAD BOLTS



Part #	SIZE	QTY
125-672	1/4-20 X 3/4	25
125-673	1/4-20 X 1	25
125-674	1/4-20 X 1-1/4	25
125-675	1/4-20 X 1-1/2	25
125-682	5/16-18 X 1/2	25
125-686	5/16-18 X 1	25
125-687	5/16-18 X 1-1/4	25
125-688	5/16-18 X 1-1/2	25
125-700	3/8-16 X 3/4	25
125-702	3/8-16 X 1	25
125-704	3/8-16 X 1-1/4	25
125-706	3/8-16 X 1-1/2	25

STAINLESS FULL THREAD TAP BOLTS



STAINLESS TAP BOLTS

Part #	LGTH	QTY
125-810	3/8-16 X 2-1/2	25
125-845	1/2-13 X 2-1/2	25

STAINLESS FENDER WASHERS



STAINLESS FENDER

Part #	SIZE	MATERIAL	QTY
126-010	3/16 x 1	.040	50
126-015	1/4 X 1-1/4	.050	50
126-016	1/4 X 1-1/2	.062	50
126-017	1/4 X 2	.062	25
126-020	5/16 X 1-1/4	.050	50
126-025	5/16 X 1-1/2	.062	25
126-026	5/16 X 2	.062	25
126-030	3/8 X 1-1/2	.062	25
126-032	3/8 X 2	.062	25
126-033	1/2 X 1-1/2	.062	25
126-035	1/2 X 2	.062	25

STAINLESS WING NUTS



WING NUTS

Part #	SIZE	QTY
126-324	1/4-20	50
126-326	5/16-18	25
126-328	3/8-16	25

STAINLESS STEEL PHIL PAN MACHINE SCREWS



6-32 DIAMETER

Part #	SIZE	QTY
126-945	6-32 X 1/2	50
126-947	6-32 X 3/4	50
126-949	6-32 X 1	50
126-950	6-32 X 1-1/4	50
126-951	6-32 X 1-1/2	50

8-32 DIAMETER

Part #	SIZE	QTY
126-960	8-32 X 1/2	50
126-962	8-32 X 3/4	50
126-964	8-32 X 1	50
126-965	8-32 X 1-1/4	50
126-966	8-32 X 1-1/2	50

10-24 DIAMETER

Part #	SIZE	QTY
126-976	10-24 X 1/2	50
126-978	10-24 X 3/4	50
126-980	10-24 X 1	50
126-981	10-24 X 1-1/4	25
126-982	10-24 X 1-1/2	25
126-984	10-24 X 2	25

10-32 DIAMETER

Part #	SIZE	QTY
127-101	10-32 X 1/2	50
127-103	10-32 X 3/4	50
127-105	10-32 X 1	50
127-106	10-32 X 1-1/4	25
127-107	10-32 X 1-1/2	25

1/4-20 DIAMETER

Part #	SIZE	QTY
127-148	1/4-20 X 1/2	25
127-150	1/4-20 X 3/4	25
127-152	1/4-20 X 1	25
127-153	1/4-20 X 1-1/4	25
127-154	1/4-20 X 1-1/2	25
127-158	1/4-20 X 2	25

STAINLESS STEEL PHIL OVAL MACHINE SCREWS



6-32 DIAMETER

Part #	SIZE	QTY
127-210	6-32 X 1/2	50
127-212	6-32 X 3/4	50
127-214	6-32 X 1	50
127-216	6-32 X 1-1/4	50
127-218	6-32 X 1-1/2	50

8-32 DIAMETER

Part #	SIZE	QTY
127-220	8-32 X 1/2	50
127-221	8-32 X 3/4	50
127-222	8-32 X 1	50
127-223	8-32 X 1-1/4	50
127-224	8-32 X 1-1/2	50

10-24 DIAMETER

Part #	SIZE	QTY
127-228	10-24 X 1/2	50
127-229	10-24 X 3/4	50
127-230	10-24 X 1	50
127-231	10-24 X 1-1/4	25
127-232	10-24 X 1-1/2	25
127-233	10-24 X 2	25

10-32 DIAMETER

Part #	SIZE	QTY
127-236	10-32 X 1/2	50
127-237	10-32 X 3/4	50
127-238	10-32 X 1	50
127-239	10-32 X 1-1/4	25
127-240	10-32 X 1-1/2	25

1/4-20 DIAMETER

Part #	SIZE	QTY
127-244	1/4-20 X 1/2	50
127-245	1/4-20 X 3/4	50
127-246	1/4-20 X 1	25
127-247	1/4-20 X 1-1/4	25
127-248	1/4-20 X 1-1/2	25

STAINLESS STEEL PHIL FLAT MACHINE SCREWS



6-32 DIAMETER

Part #	SIZE	QTY
127-276	6-32 X 1/2	50
127-277	6-32 X 3/4	50
127-278	6-32 X 1	50
127-279	6-32 X 1-1/4	50
127-280	6-32 X 1-1/2	50

8-32 DIAMETER

Part #	SIZE	QTY
127-284	8-32 X 1/2	50
127-285	8-32 X 3/4	50
127-286	8-32 X 1	50
127-287	8-32 X 1-1/4	50
127-288	8-32 X 1-1/2	50

10-24 DIAMETER

Part #	SIZE	QTY
127-292	10-24 X 1/2	50
127-293	10-24 X 3/4	50
127-294	10-24 X 1	50
127-295	10-24 X 1-1/4	25
127-296	10-24 X 1-1/2	25
127-298	10-24 X 2	25

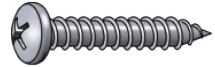
10-32 DIAMETER

Part #	SIZE	QTY
127-302	10-32 X 1/2	50
127-303	10-32 X 3/4	50
127-304	10-32 X 1	50
127-305	10-32 X 1-1/4	25
127-306	10-32 X 1-1/2	25

1/4-20 DIAMETER

Part #	SIZE	QTY
127-310	1/4-20 X 1/2	50
127-311	1/4-20 X 3/4	50
127-312	1/4-20 X 1	25
127-313	1/4-20 X 1-1/4	25
127-314	1/4-20 X 1-1/2	25

STAINLESS STEEL PHIL PAN HEAD SHEET METAL



#6 DIAMETER

Part #	SIZE	QTY
127-632	6 X 3/8	50
127-633	6 X 1/2	50
127-635	6 X 3/4	50
127-637	6 X 1	50

#12 DIAMETER

Part #	SIZE	QTY
127-685	12 X 1/2	50
127-688	12 X 3/4	50
127-689	12 X 1	50
127-690	12 X 1-1/4	25
127-691	12 X 1-1/2	25
127-693	12 X 2	25

#8 DIAMETER

Part #	SIZE	QTY
127-645	8 X 3/8	50
127-647	8 X 1/2	50
127-648	8 X 3/4	50
127-649	8 X 1	50
127-650	8 X 1-1/4	50

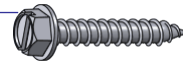
#14 DIAMETER

Part #	SIZE	QTY
127-714	14 X 1/2	25
127-718	14 X 3/4	25
127-719	14 X 1	25
127-720	14 X 1-1/4	25
127-721	14 X 1-1/2	25
127-722	14 X 1-3/4	25
127-723	14 X 2	25

#10 DIAMETER

Part #	SIZE	QTY
127-667	10 X 1/2	50
127-668	10 X 3/4	50
127-669	10 X 1	50
127-670	10 X 1-1/4	25
127-671	10 X 1-1/2	25
127-673	10 X 2	25

STAINLESS STEEL HEX HEAD SHEET METAL



#8 DIAMETER

Part #	SIZE	QTY
127-733	8 X 1/2	50
127-734	8 X 3/4	50
127-735	8 X 1	50

#12 DIAMETER

Part #	SIZE	QTY
127-748	12 X 3/4	50
127-749	12 X 1	50
127-751	12 X 1-1/2	25
127-754	12 X 2	25

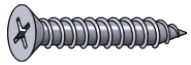
#10 DIAMETER

Part #	SIZE	QTY
127-739	10 X 1/2	50
127-740	10 X 3/4	50
127-742	10 X 1	50
127-744	10 X 1-1/2	50

#14 DIAMETER

Part #	SIZE	QTY
127-762	14 X 3/4	25
127-763	14 X 1	25
127-765	14 X 1-1/2	25
127-767	14 X 2	25

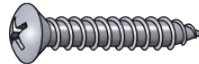
STAINLESS STEEL FLAT HEAD SHEET METAL



#10 DIAMETER

Part #	SIZE	QTY
127-844	10 X 1-1/2	50

STAINLESS STEEL PHIL OVAL HEAD SHEET METAL



#8 DIAMETER

Part #	SIZE	QTY
127-775	6 X 1/2	50
127-777	6 X 3/4	50
127-779	6 X 1	50
127-781	6 X 1-1/4	50

#12 DIAMETER

Part #	SIZE	QTY
127-806	10 X 1/2	50
127-808	10 X 3/4	50
127-810	10 X 1	50
127-812	10 X 1-1/4	50
127-814	10 X 1-1/2	25

#10 DIAMETER

Part #	SIZE	QTY
127-790	8 X 1/2	50
127-792	8 X 3/4	50
127-794	8 X 1	50
127-796	8 X 1-1/4	50
127-798	8 X 1-1/2	50

#14 DIAMETER

Part #	SIZE	QTY
127-820	12 X 3/4	25
127-822	12 X 1	25
127-824	12 X 1-1/4	25
127-826	12 X 1-1/2	25

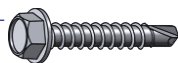
STAINLESS STEEL OVAL HEAD TEK SHEET METAL



#10 DIAMETER

Part #	SIZE	QTY
128-073	10 X 1	50
128-075	10 X 1-1/2	50
128-092	12 X 1	50
128-094	12 X 1-1/2	25

STAINLESS STEEL HEX TEKS SHEET METAL



#8 DIAMETER

Part #	SIZE	QTY
128-847	8 X 1/2	50
128-848	8 X 3/4	50
128-849	8 X 1	50
128-851	8 X 1-1/2	50

#12 DIAMETER

Part #	SIZE	QTY
128-888	12 X 3/4	50
128-889	12 X 1	50
128-891	12 X 1-1/2	25
128-893	12 X 2	25

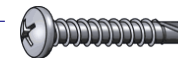
#10 DIAMETER

Part #	SIZE	QTY
128-867	10 X 1/2	50
128-868	10 X 3/4	50
128-869	10 X 1	50
128-870	10 X 1-1/4	50
128-871	10 X 1-1/2	50

#14 DIAMETER

Part #	SIZE	QTY
128-918	14 X 3/4	25
128-919	14 X 1	25
128-921	14 X 1-1/2	25
128-923	14 X 2	25

STAINLESS STEEL PHIL PAN HEAD TEKS SHEET METAL



#8 DIAMETER

Part #	SIZE	QTY
128-930	8 X 1/2	50
128-932	8 X 3/4	50
128-934	8 X 1	50

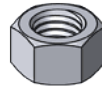
#12 DIAMETER

Part #	SIZE	QTY
128-960	12 X 3/4	50
128-962	12 X 1	50

#10 DIAMETER

Part #	SIZE	QTY
128-940	10 X 1/2	50
128-942	10 X 3/4	50
128-944	10 X 1	50

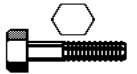
BRASS NUTS



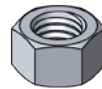
BRASS NUTS

Part #	SIZE	QTY
129-030	1/4-20	50
129-031	5/16-18	50
129-032	3/8-16	50
129-034	1/2-13	25
129-042	1/4-28	50
129-043	5/16-24	50
129-044	3/8-24	50
129-046	1/2-20	25

GALVANIZED BOLTS



GALVANIZE NUTS



COPPER FLAT WASHERS



STANDARD

Part #	SIZE	ID	OD	QTY
129-425	3/16	1/4	7/16	25
129-427	3/16	1/4	5/8	25
129-429	1/4	5/16	1/2	25
129-431	1/4	5/16	11/16	25
129-433	5/16	3/8	9/16	25
129-435	5/16	3/8	3/4	25
129-437	3/8	7/16	13/16	25
129-439	7/16	1/2	7/8	25
129-441	1/2	9/16	13/16	25

GALVANIZED FLATS / LOCKS



METRIC

Part #	SIZE	ID	OD	QTY
129-470	6MM	6.2MM	9.8MM	25
129-474	8MM	8.2MM	11.8MM	25
129-478	10MM	10.2MM	15.8MM	25
129-482	12MM	12.2MM	17.8MM	25
129-486	14MM	14.2MM	17.8MM	25
129-490	14MM	14.2MM	19.8MM	25
129-492	16MM	16.2MM	19.8MM	25

METRIC NUTS GRADE 8.8 PLATED



COARSE 8.8 NUTS

Part #	SIZE	QTY
131-004	4 X .75	100
131-005	5 X .80	100
131-006	6 X 1.00	100
131-007	7 X 1.00	50
131-008	8 X 1.25	50
131-010	10 X 1.50	50
131-012	12 X 1.75	25
131-014	14 X 2.00	12
131-016	16 X 2.00	10

FINE 8.8 NUTS

Part #	SIZE	QTY
131-018	8 X 1.00	50
131-020	10 X 1.00	25
131-024	10 X 1.25	25
131-026	12 X 1.25	12
131-028	12 X 1.50	12
131-032	24 X 3.00	10

METRIC LOCK NUTS STOVER



COARSE STOVER 10.9 NUTS

Part #	SIZE	QTY
131-108	6 X 1.00	50
131-110	8 X 1.25	50
131-116	10 X 1.50	25
131-122	12 X 1.75	25
131-128	14 X 2.00	10
131-134	16 X 2.00	10
131-140	18 X 2.50	10

FINE STOVER 10.9 NUTS

Part #	SIZE	QTY
131-112	8 X 1.00	50
131-118	10 X 1.25	25
131-120	10 X 1.00	25
131-124	12 X 1.50	25
131-126	12 X 1.25	25
131-130	14 X 1.50	10
131-136	16 X 1.50	10
131-142	18 X 1.50	10

METRIC 8.8 FLATS / LOCKS



METRIC 8.8 FLATS

Part #	SIZE	QTY
131-034	4	100
131-035	5	100
131-036	6	100
131-037	7	100
131-038	8	100
131-040	10	100
131-042	12	50
131-044	14	25
131-046	16	25
131-048	18	25
131-050	20	25

METRIC 8.8 LOCKS

Part #	SIZE	QTY
131-064	4	100
131-065	5	100
131-066	6	100
131-067	7	100
131-068	8	100
131-070	10	100
131-072	12	50
131-074	14	25
131-076	16	25
131-078	18	25
131-080	20	12
131-082	24	12
131-086	30	12

METRIC LOCK NUTS NYLON

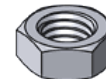


COARSE NYLON 8.8 LOCK NUTS

Part #	SIZE	QTY
131-150	6 X 1.00	50
131-155	7 X 1.00	50
131-160	8 X 1.25	50
131-165	10 X 1.50	25
131-180	12 X 1.75	25
131-195	14 X 2.00	10
131-210	16 X 2.00	10
131-218	18 X 1.50	10
131-225	20 X 2.50	10

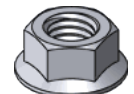
FINE NYLON 8.8 LOCK NUTS

Part #	SIZE	QTY
131-163	8 X 1.00	50
131-170	10 X 1.25	25
131-175	10 X 1.00	25
131-185	12 X 1.50	25
131-190	12 X 1.25	25
131-198	14 X 1.50	10
131-212	16 X 1.50	10



METRIC JAM NUTS

Part #	SIZE	QTY
131260	20 X 2.50	10



METRIC FLANGE NUTS

Part #	SIZE	QTY
131360	20 X 2.50	10

COARSE METRIC 8.8 BOLTS



4 X .75 METRIC 8.8

Part #	LGTH	QTY
131-002	12	25
131-503	16	25
131-505	20	25
131-506	25	25

7 X 1.00 METRIC 8.8

Part #	LGTH	QTY
131-716	16	25
131-720	20	25
131-730	30	25
131-735	35	25

5 X .80 METRIC 8.8

Part #	LGTH	QTY
131-510	10	25
131-512	12	25
131-516	16	25
131-520	20	25
131-525	25	25
131-530	30	25
131-535	35	25

8 X 1.25 METRIC 8.8

Part #	LGTH	QTY
131-812	12	25
131-816	16	25
131-820	20	25
131-825	25	25
131-830	30	25
131-835	35	25
131-840	40	25
131-850	50	12
131-860	60	12
131-870	70	12
131-875	75	12
131-880	80	12
131-885	90	12
131-890	100	12

6 X 1.00 METRIC 8.8

Part #	LGTH	QTY
131-610	10	25
131-612	12	25
131-616	16	25
131-620	20	25
131-625	25	25
131-630	30	25
131-635	35	25
131-640	40	25
131-644	50	25
131-646	60	25
131-658	120	25

COARSE METRIC 8.8 BOLTS



10 X 1.50 METRIC 8.8

Part #	LGTH	QTY
132-010	10	25
132-016	16	25
132-020	20	25
132-025	25	25
132-030	30	25
132-031	35	25
132-040	40	12
132-045	45	12
132-050	50	12
132-051	55	12
132-060	60	12
132-070	70	12
132-080	80	12
132-085	90	12
132-090	100	12

12 X 1.75 METRIC 8.8

Part #	LGTH	QTY
132-226	20	25
132-228	25	25
132-230	30	25
132-235	35	12
132-240	40	12
132-245	45	12
132-250	50	12
132-260	60	12
132-270	70	12
132-280	80	12
132-285	90	12
132-290	100	12
132-299	220	12

FINE METRIC 8.8 BOLTS



8 X 1.00 METRIC 8.8

Part #	LGTH	QTY
132-320	10	25
132-322	20	25
132-324	25	25
132-326	30	25
132-328	40	25

10 X 1.00 METRIC 8.8

Part #	LGTH	QTY
132-630	20	12
132-632	30	12
132-634	40	12
132-636	50	12

10 X 1.25 METRIC 8.8

Part #	LGTH	QTY
132-638	25	12
132-640	30	12
132-642	35	12
132-644	40	12
132-649	60	12

12 X 1.50 METRIC 8.8

Part #	LGTH	QTY
132-810	20	12
132-820	30	12
132-821	35	12
132-823	40	12
132-830	50	12

12 X 1.25 METRIC 8.8

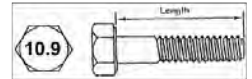
Part #	LGTH	QTY
132-944	30	12
132-952	50	12

16 X 2.00 METRIC 8.8

Part #	LGTH	QTY
133200	20	12

METRIC GRADE 10.9 PLATED

METRIC 10.9 BOLTS



COARSE 10.9 NUTS

Part #	SIZE	QTY
135-006	6 X 1.00	100
135-008	8 X 1.25	50
135-010	10 X 1.50	50
135-012	12 X 1.75	25
135-014	14 X 2.00	12
135-016	16 X 2.00	12
135-018	18 X 2.50	12
135-020	20 X 2.50	12
135-022	24 X 3.00	12
135-026	30 X 3.50	5
135-027	8 X 1.00	25
135-028	10 X 1.00	25
135-029	10 X 1.25	25
135-033	22 X 1.50	5

METRIC 10.9 FLATS

Part #	SIZE	QTY
135-036	6	100
135-038	8	100
135-040	10	50
135-042	12	25
135-044	14	25
135-046	16	12
135-048	18	12
135-050	20	12
135-054	24	12

10 X 1.50 METRIC 10.9

Part #	LGTH	QTY
135-744	16	25
135-746	20	25
135-748	25	25
135-750	30	25
135-752	35	25
135-754	40	12
135-758	50	12
135-763	60	12
135-764	65	12
135-765	70	12
135-766	80	12
135-767	90	12
135-768	100	12
135-769	110	12
135-770	120	12
135-771	130	12
135-772	140	12
135-773	150	12

12 X 1.75 METRIC 10.9

Part #	LGTH	QTY
135-775	20	25
135-776	25	25
135-777	30	25
135-778	35	12
135-780	40	12
135-782	45	12
135-784	50	12
135-786	60	12
135-790	70	12
135-794	80	12
135-798	90	12
135-800	100	12
135-801	110	12
135-802	120	12
135-803	130	12
135-804	140	12
135-805	150	12

6 X 1.00 METRIC 10.9

Part #	LGTH	QTY
135-642	12	25
135-646	16	25
135-648	20	25
135-650	25	25
135-652	30	25
135-654	35	25
135-656	40	25
135-658	45	25
135-660	50	25
135-662	60	12
135-664	70	12
135-666	80	12
135-668	90	12
135-670	100	12
135-672	110	12
135-674	120	12

8 X 1.25 METRIC 10.9

Part #	LGTH	QTY
135-714	16	25
135-716	20	25
135-718	25	25
135-720	30	25
135-722	35	25
135-724	40	25
135-728	50	12
135-732	60	12
135-734	70	12
135-736	80	12
135-737	90	12
135-738	100	12
135-739	110	12
135-740	120	12
135-741	130	12
135-742	140	12
135-743	150	12

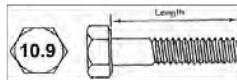
14 X 2.00 METRIC 8.8

Part #	LGTH	QTY
135-814	30	10
135-816	35	10
135-818	40	10
135-822	50	10
135-826	60	10
135-830	70	10
135-832	80	10
135-834	90	10
135-836	100	10
135-838	110	10
135-840	120	10
135-842	130	10
135-844	140	10
135-846	150	10

16 X 2.00 METRIC 10.9

Part #	LGTH	QTY
135-854	30	10
135-858	40	10
135-862	50	10
135-866	60	10
135-870	70	10
135-872	75	10
135-874	80	10
135-878	90	10
135-882	100	10
135-884	110	10
135-886	120	10
135-888	130	10
135-890	140	10
135-892	150	10

METRIC 10.9 BOLTS



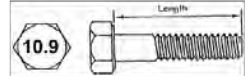
18 X 2.50 METRIC 10.9

Part #	LGTH	QTY
135-944	30	10
135-946	40	10
135-948	50	10
135-950	60	10
135-952	70	10

20 X 2.50 METRIC 10.9

Part #	LGTH	QTY
135-958	30	10
135-960	40	10
135-962	50	10
135-964	60	10
135-966	70	10
135-996	220	5

METRIC 10.9 BOLTS



18 X 1.50 METRIC 10.9

Part #	LGTH	QTY

30 X 3.50 METRIC 10.9

Part #	LGTH	QTY

6 X .75 METRIC 10.9

Part #	LGTH	QTY

8 X 1.00 METRIC 10.9

Part #	LGTH	QTY

10 X 1.25 METRIC 10.9

Part #	LGTH	QTY
136-800	45	10

12 X 1.50 METRIC 10.9

Part #	LGTH	QTY
136-250	40	10

14 X 1.50 METRIC 10.9

Part #	LGTH	QTY
136-320	30	10
136-324	50	10

20 X 2.50 METRIC 10.9

Part #	LGTH	QTY

16 X 1.50 METRIC 10.9

Part #	LGTH	QTY

24 X 3.00 METRIC 10.9

Part #	LGTH	QTY

FLANGE HEAD HEAD BOLTS



JIS HEAD

PART #	LGTH	QTY
136896	10-1.25 X 30	25
136950	10-1.50 X 35	25
136-962	10-1.50 X 90	10

SOCKET HEAD BOLTS



SOCKET HEAD BOLTS



5 X .80 DIAMETER

PART #	LGTH	QTY
137-110	10	25
137-120	20	25
137-130	30	25

8 X 1.25 DIAMETER

PART #	LGTH	QTY
137-312	12	25
137-315	15	25
137-320	20	25
137-325	25	25
137-330	30	25
137-335	35	25
137-340	40	25
137-350	50	25
137-360	60	25
137-370	70	25

12 X 1.75 DIAMETER

PART #	LGTH	QTY
137-520	20	10
137-525	25	10
137-530	30	10
137-540	40	10
135-545	45	10
137-550	50	10
137-560	60	10
137-568	100	10
137-572	160	10

14 X 2.00 DIAMETER

PART #	LGTH	QTY
137-575	30	10
137-577	35	10
137-579	40	10
137-581	45	10
135-583	50	10
135-587	60	10
137-591	70	10
137-595	80	10

6 X 1.00 DIAMETER

PART #	LGTH	QTY
137-210	10	25
137-212	12	25
137-215	15	25
137-220	20	25
137-225	25	25
137-230	30	25
137-248	110	25

10 X 1.50 DIAMETER

PART #	LGTH	QTY
137-415	15	25
137-420	20	25
137-425	25	25
137-430	30	25
137-435	35	25
137-440	40	25
137-450	50	25
137-460	60	25
137-480	80	25
137-490	90	25

16 X 2.00 DIAMETER

PART #	LGTH	QTY
137-646	40	10
137-650	60	10
137-652	65	10
137-660	75	

18 X 1.50 DIAMETER

PART #	LGTH	QTY
137-850	40	10

20 X 2.50 DIAMETER

PART #	LGTH	QTY
137-890	65	10
137-905	100	10

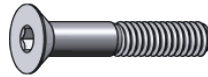
LOW PROFILE SOCKET HEAD BOLTS



16 X 2.00 DIAMETER

PART #	LGTH	QTY
137-970	35	EA

SOCKET HEAD BOLTS



5 X .80 DIAMETER

PART #	LGTH	QTY
138-112	12	25
138-115	15	25
138-120	20	25

10 X 1.50 DIAMETER

PART #	LGTH	QTY
138-336	25	25
138-338	30	25
138-340	40	25
138-342	50	25
138-344	60	25
138-346	70	25

6 X 1.00 DIAMETER

PART #	LGTH	QTY
138-215	15	25
138-220	20	25
138-225	25	25
138-230	30	25

12 X 1.75 DIAMETER

PART #	LGTH	QTY
138-650	25	10
138-651	30	10
138-554	40	10
138-556	50	10

8 X 1.25 DIAMETER

PART #	LGTH	QTY
138-320	20	25
138-325	25	25
138-330	30	25
138-340	40	25

14 X 2.00 DIAMETER

PART #	LGTH	QTY
138-680	30	25

16 X 2.00 DIAMETER

PART #	LGTH	QTY
138-729	30	10
138-730	35	10
138-735	60	10

STAINLESS SOCKET HEAD BOLTS



8 X 1.25 DIAMETER

PART #	LGTH	QTY
140-200	35	25

METRIC PHIL HEAD MACHINE SCREWS



Part #	SIZE	QTY
141-125	4 X .70 X 8	50
141-127	4 X .70 X 10	50
141-129	4 X .70 X 16	50

Part #	SIZE	QTY
141-160	6 X 1.00 X 10	50
141-162	6 X 1.00 X 12	50
141-164	6 X 1.00 X 16	50
141-166	6 X 1.00 X 20	50
141-168	6 X 1.00 X 25	50
141-170	6 X 1.00 X 30	50

Part #	SIZE	QTY
141-140	5 X .80 X 8	50
141-142	5 X .80 X 10	50
141-144	5 X .80 X 12	50
141-146	5 X .80 X 16	50
141-148	5 X .80 X 20	50

HIGH-COLLAR LOCK WASHERS



HIGH-COLLAR

Part #	SIZE	QTY
150-095	1/4	50
150-096	5/16	50
150-097	3/8	50
150-098	1/2	25
150-099	5/8	25

SOCKET HEAD BOLTS



10-24 DIAMETER

Part #	LGTH	QTY
150-224	1/4	50
150-226	1/2	50
150-227	5/8	50
150-228	3/4	50
150-232	1	50
150-234	1-1/2	50
150-246	2	50

1/4-20 DIAMETER

Part #	LGTH	QTY
150-276	3/4	50
150-282	1	50
150-294	1-1/4	50
150-295	1-1/2	50
150-296	1-3/4	25
150-306	2	25
150-307	2-1/4	25
150-312	2-1/2	25
150-318	3	25
150-335	7	25

10-32 DIAMETER

Part #	LGTH	QTY
150-236	1/2	50
150-240	3/4	50
150-242	1	50
150-244	1-1/2	50
150-246	2	50

SOCKET HEAD BOLTS



5/16-18 DIAMETER

Part #	LGTH	QTY
150-349	1/2	50
150-351	3/4	50
150-357	1	50
150-371	1-1/4	50
150-372	1-1/2	50
150-373	1-3/4	25
150-381	2	25
150-393	2-1/2	25
150-394	2-3/4	25
150-399	3	25

1/2-13 DIAMETER

Part #	LGTH	QTY
150-589	1	25
150-590	1-1/4	25
150-591	1-1/2	25
150-592	1-3/4	25
150-597	2	25
150-606	2-1/2	25
150-612	3	25
150-627	4	10
150-633	4-1/2	10

3/8-16 DIAMETER

Part #	LGTH	QTY
150-435	1/2	50
150-440	3/4	50
150-447	1	50
150-450	1-1/4	50
150-456	1-1/2	50
150-459	1-3/4	25
150-462	2	25
150-465	2-1/4	25
150-468	2-1/2	25
150-474	3	25
150-483	3-1/2	25
150-489	4	25

5/8-11 DIAMETER

Part #	LGTH	QTY
150-640	2	10
150-642	2-1/2	10
150-644	3	10
150-646	3-1/2	10
150-648	4	10

3/4-10 DIAMETER

Part #	LGTH	QTY
150-686	2	10
150-688	2-1/2	10
150-690	3	10
150-692	3-1/2	10
150-694	4	10
150-708	7	10

7/16-14 DIAMETER

Part #	LGTH	QTY
150-517	1/2	25
150-521	3/4	25
150-525	1	25
150-527	1-1/4	25
150-531	1-1/2	25
150-534	1-3/4	25
150-540	2	25
150-544	2-1/4	25
150-546	2-1/2	25
150-548	2-3/4	25
150-552	3	25

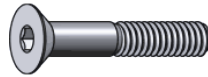
7/8-9 DIAMETER

Part #	LGTH	QTY
150-709	2	EA
150-710	8	EA

1-8 DIAMETER

Part #	LGTH	QTY
150-735	6	EA

FLAT SOCKET HEADS



6-32 DIAMETER

Part #	LGTH	QTY
150-720	3/8	100
150-722	1/2	100
150-724	5/8	100
150-726	3/4	100
150-728	1	100

8-32 DIAMETER

Part #	LGTH	QTY
150-782	1/2	100
150-783	5/8	100
150-784	3/4	100
150-786	1	100

10-24 DIAMETER

Part #	LGTH	QTY
150-792	1/2	100
150-793	5/8	100
150-795	3/4	100
150-797	1	100

10-32 DIAMETER

Part #	LGTH	QTY
150-812	1/2	100
150-814	5/8	100
150-816	3/4	100
150-818	1	100

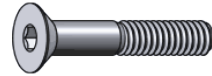
1/4-20 DIAMETER

Part #	LGTH	QTY
150-832	3/4	25
150-834	1	25
150-835	1-1/4	25
150-836	1-1/2	25

5/16-18 DIAMETER

Part #	LGTH	QTY
150-857	3/4	25
150-859	1	25
150-860	1-1/4	25
150-861	1-1/2	25
150-862	1-3/4	25

FLAT SOCKET HEADS



3/8-16 DIAMETER

Part #	LGTH	QTY
150-899	3/4	25
150-901	1	25
150-902	1-1/4	25
150-908	1-1/2	25
150-909	1-3/4	25
150-910	2	25

7/16-14 DIAMETER

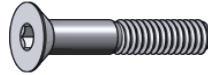
Part #	LGTH	QTY
150-940	3/4	25
150-941	7/8	25
150-942	1	25
150-943	1-1/4	25
150-944	1-1/2	25

1/2-13 DIAMETER

Part #	LGTH	QTY
151-020	3/4	25
151-022	1	25
151-024	1-1/4	25
151-026	1-1/2	25
151-028	1-3/4	25
151-030	2	25
151-034	2-1/2	25
151-038	3	25

152: SOCKET HEADS

FLAT SOCKET HEADS



1/4-28 DIAMETER

Part #	LGTH	QTY
152-320	3/4	25
152-322	1	25
152-324	1-1/4	25
152-326	1-1/2	25

7/16-20 DIAMETER

Part #	LGTH	QTY
152-384	3/4	25
152-386	1	25
152-388	1-1/4	25
152-390	1-1/2	25
152-392	1-3/4	25

5/16-24 DIAMETER

Part #	LGTH	QTY
152-340	3/4	25
152-342	1	25
152-344	1-1/4	25
152-346	1-1/2	25

1/2-20 DIAMETER

Part #	LGTH	QTY
152-430	3/4	25
152-432	1	25
152-434	1-1/4	25
152-436	1-1/2	25
152-438	1-3/4	25

3/8-24 DIAMETER

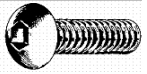
Part #	LGTH	QTY
152-360	3/4	25
152-362	1	25
152-364	1-1/4	25
152-366	1-1/2	25
152-368	1-3/4	25

5/8-18 DIAMETER

Part #	LGTH	QTY
152-485	1	10
152-490	2	10

152: BUTTON HEADS

BUTTON HEAD SOCKETS



1/4-20 DIAMETER

Part #	LGTH	QTY
152-730	3/8	50
152-732	1/2	50
152-734	3/4	50
152-736	1	50

5/16-18 DIAMETER

Part #	LGTH	QTY
152-750	1/2	50
152-752	3/4	50
152-754	1	50

3/8-16 DIAMETER

Part #	LGTH	QTY
152-770	1/2	50
152-772	3/4	50
152-774	1	50
152-776	1-1/4	50

USS SET SCREWS



4-40 DIAMETER

Part #	LGTH	QTY
153-476	3/16	100

5-40 DIAMETER

Part #	LGTH	QTY

6-32 DIAMETER

Part #	LGTH	QTY
153-530	1/4	100
153-538	1/2	100
153-540	5/8	100
153-542	3/4	100

8-32 DIAMETER

Part #	LGTH	QTY
153-561	3/16	100
153-563	1/4	100
153-565	5/16	100
153-569	3/8	100
153-575	1/2	100
153-577	5/8	100
153-579	3/4	100

10-24 DIAMETER

Part #	LGTH	QTY
153-590	3/16	100
153-592	1/4	100
153-594	5/16	100
153-596	3/8	100
153-598	7/16	100
153-600	1/2	100
153-602	5/8	100
153-604	3/4	100
153-606	1	100

10-32 DIAMETER

Part #	LGTH	QTY
153-614	3/16	100
153-616	1/4	100
153-618	5/16	100
153-620	3/8	100
153-622	7/16	100
153-624	1/2	100
153-626	5/8	100
153-628	3/4	100
153-630	1	100

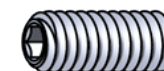
1/4-20 DIAMETER

Part #	LGTH	QTY
153-644	1/4	50
153-646	5/16	50
153-648	3/8	50
153-650	7/16	50
153-652	1/2	50
153-654	5/8	50
153-656	3/4	50
153-658	1	50

5/16-18 DIAMETER

Part #	LGTH	QTY
153-672	1/4	25
153-674	5/16	25
153-676	3/8	25
153-678	7/16	25
153-680	1/2	25
153-682	5/8	25
153-684	3/4	25
153-686	1	25

USS SET SCREWS



3/8-16 DIAMETER

Part #	LGTH	QTY
153-704	1/2	25
153-706	5/8	25
153-708	3/4	25
153-710	1	25
153-712	1-1/4	25

1/2-13 DIAMETER

Part #	LGTH	QTY
153-790	1/2	25
153-794	3/4	25
153-796	1	25
153-800	1-1/2	25

7/16-14 DIAMETER

Part #	LGTH	QTY
153-722	3/8	25
153-726	1/2	25
153-780	5/8	25
153-782	3/4	25
153-784	1	25

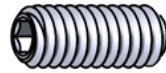
5/8-11 DIAMETER

Part #	LGTH	QTY
153-814	3/8	10
153-816	1/2	10
153-818	5/8	10
153-820	3/4	10
153-822	1	10

3/4-10 DIAMETER

Part #	LGTH	QTY
153-846	1/2	10
153-848	5/8	10
153-850	3/4	10
153-852	1	10

SAE SET SCREWS



1/4-28 DIAMETER

Part #	LGTH	QTY
153-906	1/4	50
153-908	5/16	50
153-910	3/8	50
153-912	7/16	50
153-914	1/2	50
153-916	5/8	50
153-918	3/4	50
153-920	1	50

7/16-20 DIAMETER

Part #	LGTH	QTY
153-970	3/8	25
153-972	1/2	25

1/2-20 DIAMETER

Part #	LGTH	QTY
153-982	1/2	25
153-986	3/4	25
153-988	1	25

5/16-24 DIAMETER

Part #	LGTH	QTY
153-930	1/4	25
153-932	5/16	25
153-934	3/8	25
153-936	7/16	25
153-938	1/2	25
153-940	5/8	25
153-942	3/4	25
153-944	1	25

5/8-18 DIAMETER

Part #	LGTH	QTY
154-014	3/8	10
154-016	1/2	10
154-018	5/8	10
154-020	3/4	10
154-022	1	10

3/8-24 DIAMETER

Part #	LGTH	QTY
153-952	1/2	25
153-954	5/8	25
153-956	3/4	25
153-958	1	25
153-960	1-1/4	25

3/4-16 DIAMETER

Part #	LGTH	QTY
154-046	1/2	10
154-048	5/8	10
154-050	3/4	10
154-052	1	10

SQUARE HEAD SET SCREW



3/8-16 DIAMETER

Part #	LGTH	QTY
154-125	3/4	25
154-127	1	25
154-129	1-1/4	25

METRIC SET SCREWS



4 X .70 DIAMETER

Part #	LGTH	QTY
155-534	8	25

10 X 1.50 DIAMETER

Part #	LGTH	QTY
155-624	16	25
155-626	20	25
155-628	30	25

5 X .80 DIAMETER

Part #	LGTH	QTY
155-554	8	25
155-556	10	25
155-560	16	25

12 X 1.75 DIAMETER

Part #	LGTH	QTY
155-646	16	25
155-648	20	25
155-650	30	25

6 X 1.00 DIAMETER

Part #	LGTH	QTY
155-574	8	25
155-576	10	25
155-580	16	25

16 X 2.00 DIAMETER

Part #	LGTH	QTY
155-710	25	25

8 X 1.25 DIAMETER

Part #	LGTH	QTY
155-592	10	25
155-596	16	25
155-600	20	25
155-602	25	25

SOCKET SHOLDER BOLTS



156: CARRIAGE BOLTS

CARRIAGE BOLTS ZINC



1/4-20 DIAMETER

Part #	LGTH	QTY
156-022	3/4	100
156-023	1	100
156-024	1-1/4	100
156-025	1-1/2	100
156-026	1-3/4	100
156-027	2	100
156-029	2-1/2	50
156-031	3	50
156-035	4	50
156-039	5	50
156-043	6	50
156-045	7	50
156-047	8	50

5/16-18 DIAMETER

Part #	LGTH	QTY
156-053	1	100
156-054	1-1/4	100
156-055	1-1/2	100
156-057	2	100
156-059	2-1/2	50
156-061	3	50
156-063	4	50
156-065	5	25
156-067	6	25
156-069	7	25
156-071	8	25

7/16-13 DIAMETER

Part #	LGTH	QTY
156-100	1-1/4	50
156-101	1-1/2	50

3/8-16 DIAMETER

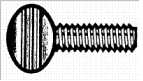
Part #	LGTH	QTY
156-072	3/4	100
156-073	1	100
156-074	1-1/4	100
156-075	1-1/2	100
156-076	1-3/4	100
156-077	2	50
156-078	2-1/4	50
156-079	2-1/2	50
156-080	2-3/4	50
156-081	3	50
156-083	3-1/2	25
156-085	4	25
156-089	5	25
156-093	6	25
156-095	7	25
156-097	8	25
156-098	9	25

1/2-13 DIAMETER

Part #	LGTH	QTY
156-113	1	50
156-114	1-1/4	50
156-115	1-1/2	50
156-117	2	50
156-119	2-1/2	25
156-121	3	25
156-123	3-1/2	25
156-125	4	25
156-127	4-1/2	25
156-129	5	10
156-133	6	10
156-137	7	10
156-141	8	10

158: LAG BOLTS

THUMB SCREWS



1/4-20 DIAMETER

Part #	LGTH	QTY
157-355	3/4	25

LAG BOLTS ZINC



1/4 HEX LAGS

Part #	LGTH	QTY
158-416	1	50
158-417	1-1/4	50
158-418	1-1/2	50
158-420	2	50

5/16 HEX LAGS

Part #	LGTH	QTY
158-496	1	50
158-499	1-1/4	50
158-500	1-1/2	25
158-501	1-3/4	25
158-502	2	25
158-504	2-1/2	25
158-506	3	25

3/8 HEX LAGS

Part #	LGTH	QTY
158-599	3/4	25
158-600	1	25
158-601	1-1/4	25
158-602	1-1/2	25
158-604	2	25
158-606	2-1/2	25
158-608	3	25
158-610	3-1/2	25
158-612	4	25
158-618	5	25

PLOW BOLTS GRADE 5



1/2-13 DIAMETER

Part #	LGTH	QTY
158-725	2	25

5/8-11 DIAMETER

Part #	LGTH	QTY
158-756	2	25
158-758	2-1/2	25
158-760	3	25
158-762	3-1/2	25

PLOW BOLTS GRADE 8



5/8-11 DIAMETER

Part #	LGTH	QTY
159-046	2	25
159-048	2-1/2	25
159-050	3	25
159-052	3-1/2	25

CARRIAGE BOLTS GRADE 5



5/8-11 DIAMETER

Part #	LGTH	QTY
159-470	2-1/2	25
159-475	3	25
159-480	4	25

CARRIAGE BOLTS GRADE 8



1/2-13 DIAMETER

Part #	LGTH	QTY
159-550	2	25
159-556	3	25

5/8-11 DIAMETER

Part #	LGTH	QTY
159-570	2-1/2	25
159-572	3	25
159-578	3-1/2	25
159-580	4	25

PHILLIPS HEAD MACHINE SCREW ZINC



4-40 DIAMETER

Part #	SIZE	QTY
165-005	4-40 X 3/4	100

5-40 DIAMETER

Part #	SIZE	QTY
165-009	5-40 X 3/4	100

6-32 DIAMETER

Part #	SIZE	QTY
165-031	6-32 X 3/8	100
165-032	6-32 X 1/2	100
165-034	6-32 X 3/4	100
165-035	6-32 X 1	100
165-036	6-32 X 1-1/4	50
165-038	6-32 X 1-1/2	50
165-042	6-32 X 2	25

8-32 DIAMETER

Part #	SIZE	QTY
165-051	8-32 X 3/8	100
165-052	8-32 X 1/2	100
165-054	8-32 X 3/4	100
165-055	8-32 X 1	100
165-056	8-32 X 1-1/4	50
165-057	8-32 X 1-1/2	50
165-059	8-32 X 2	25

10-24 DIAMETER

Part #	SIZE	QTY
165-072	10-24 X 1/2	50
165-073	10-24 x 3/8	50
165-074	10-24 X 3/4	50
165-075	10-24 X 1	50
165-076	10-24 X 1-1/4	50
165-077	10-24 X 1-1/2	50
165-079	10-24 X 2	25
165-081	10-24 X 2-1/2	25
165-083	10-24 X 3	25
165-087	10-24 X 4	25
165-091	10-24 X 5	25

10-32 DIAMETER

Part #	SIZE	QTY
165-110	10-32 x 3/8	50
165-112	10-32 X 1/2	50
165-114	10-32 X 3/4	50
165-115	10-32 X 1	50
165-116	10-32 X 1-1/4	50
165-117	10-32 X 1-1/2	50
165-119	10-32 X 2	25

1/4-20 DIAMETER

Part #	SIZE	QTY
165-150	1/4-20 X 3/8	25
165-152	1/4-20 X 1/2	25
165-154	1/4-20 X 3/4	25
165-155	1/4-20 X 1	25
165-156	1/4-20 X 1-1/4	25
165-157	1/4-20 X 1-1/2	25
165-158	1/4-20 X 1-3/4	25
165-159	1/4-20 X 2	25
165-163	1/4-20 X 3	25
159-167	1/4-20 X 4	25
165-171	1/4-20 X 5	25

12-24 DIAMETER

Part #	SIZE	QTY
165-122	12-24 X 1/2	50
165-125	12-24 X 3/4	50
165-126	12-24 X 1	50
165-128	12-24 X 1-1/2	25

PHILLIPS HEAD MACHINE SCREW ZINC



5/16-18 DIAMETER

Part #	SIZE	QTY
165-190	5/16-18 X 4	25

PHILLIPS OVAL HEAD MACHINE SCREWS ZINC



1/4-20 DIAMETER

Part #	SIZE	QTY
165-453	1/4-20 X 5/8	25
165-454	1/4-20 X 3/4	25

PHILLIPS FLAT HEAD MACHINE SCREWS ZINC



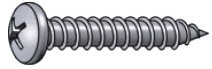
1/4-20 DIAMETER

Part #	SIZE	QTY
165-510	6-32 X 1/4	100

1/4-20 DIAMETER

Part #	SIZE	QTY
165-550	5/16-18 X 1	25

PHILLIPS PAN HEAD SHEET METAL SCREW ZINC



#6 DIAMETER

Part #	SIZE	QTY
166-001	6 X 3/8	100
166-002	6 X 1/2	100
166-004	6 X 3/4	100
166-005	6 X 1	100
166-006	6 X 1-1/4	50
166-008	6 X 1-1/2	50
166-012	6 X 2	50

#8 DIAMETER

Part #	SIZE	QTY
166-021	8 X 3/8	100
166-022	8 X 1/2	100
166-023	8 X 5/8	100
166-024	8 X 3/4	100
166-025	8 X 1	100
166-026	8 X 1-1/4	50
166-027	8 X 1-1/2	50
166-028	8 X 1-3/4	50
166-029	8 X 2	50

#10 DIAMETER

Part #	SIZE	QTY
166-041	10 X 3/8	100
166-042	10 X 1/2	100
166-043	10 X 5/8	100
166-044	10 X 3/4	100
166-045	10 X 1	100
166-046	10 X 1-1/4	50
166-047	10 X 1-1/2	50
166-049	10 X 2	50
166-051	10 X 2-1/2	50

#12 DIAMETER

Part #	SIZE	QTY
166-062	12 X 1/2	50
166-063	12 X 5/8	50
166-064	12 X 3/4	50
166-065	12 X 1	50
166-066	12 X 1-1/4	25
166-067	12 X 1-1/2	25
166-068	12 X 1-3/4	25
166-069	12 X 2	25
166-071	12 X 2-1/2	25

#14 DIAMETER

Part #	SIZE	QTY
166-082	14 X 1/2	50
166-083	14 X 5/8	50
166-084	14 X 3/4	50
166-085	14 X 1	50
166-086	14 X 1-1/4	25
166-087	14 X 1-1/2	25
166-088	14 X 1-3/4	25
166-089	14 X 2	25
166-091	14 X 2-1/2	25

PHILLIPS OVAL HEAD SHEET METAL ZINC



#6 DIAMETER

#8 DIAMETER

Part #	SIZE	QTY
166-102	6 X 1/2	100
166-104	6 X 3/4	100
166-105	6 X 1	100
166-106	6 X 1-1/4	50
166-107	6 X 1-1/2	50
166-109	6 X 2	50

Part #	SIZE	QTY
166-122	8 X 1/2	100
166-124	8 X 3/4	100
166-125	8 X 1	100
166-126	8 X 1-1/4	50
166-127	8 X 1-1/2	50
166-129	8 X 2	50

#10 DIAMETER

#12 DIAMETER

Part #	SIZE	QTY
166-140	10 X 1/2	100
166-144	10 X 3/4	100
166-145	10 X 1	100
166-146	10 X 1-1/4	50
166-147	10 X 1-1/2	50
166-149	10 X 2	50

Part #	SIZE	QTY
166-160	12 X 1/2	50
166-164	12 X 3/4	50
166-165	12 X 1	50
166-166	12 X 1-1/4	50
166-167	12 X 1-1/2	50
166-169	12 X 2	25

PHILLIPS FLAT HEAD SHEET METAL ZINC



#6 DIAMETER

#8 DIAMETER

Part #	SIZE	QTY
166-202	6 X 1/2	100
166-204	6 X 3/4	100
166-205	6 X 1	100
166-206	6 X 1-1/4	50
166-207	6 X 1-1/2	50
166-209	6 X 2	50

Part #	SIZE	QTY
166-222	8 X 1/2	100
166-224	8 X 3/4	100
166-225	8 X 1	100
166-226	8 X 1-1/4	50
166-227	8 X 1-1/2	50
166-229	8 X 2	50

#10 DIAMETER

#12 DIAMETER

Part #	SIZE	QTY
166-240	10 X 1/2	100
166-244	10 X 3/4	100
166-245	10 X 1	100
166-246	10 X 1-1/4	50
166-247	10 X 1-1/2	50
166-249	10 X 2	50

Part #	SIZE	QTY
166-260	12 X 1/2	50
166-264	12 X 3/4	50
166-265	12 X 1	50
166-266	12 X 1-1/4	50
166-267	12 X 1-1/2	50
166-269	12 X 2	25

BLACK PHILLIP OVAL TAPPING SCREW



#6 DIAMETER

#8 DIAMETER

Part #	SIZE	QTY
166-322	6 X 1/2	50
166-324	6 X 3/4	50
166-326	6 X 1	50

Part #	SIZE	QTY
166-338	8 X 1/2 (#6 HEAD)	50
166-340	8 X 1/2	50
166-344	8 X 3/4 (#6 HEAD)	50
166-346	8 X 3/4	50
166-350	8 X 1 (#6 HEAD)	50
166-352	8 X 1	50

#10 DIAMETER

Part #	SIZE	QTY
166-365	10 X 1/2 (#8 HEAD)	50
166-367	10 X 1/2	50
166-370	10 X 3/4 (#8 HEAD)	50
166-372	10 X 3/4	50
166-374	10 X 1 (#8 HEAD)	50
166-376	10 X 1	50
166-378	10 X 1-1/4 (#8 HEAD)	50
166-380	10 X 1-1/4	50
166-382	10 X 1-1/2 (#8 HEAD)	25
166-384	10 X 1-1/2	25

PHILLIPS BINDING HEAD SHEET METAL BLACK



#14 DIAMETER

Part #	SIZE	QTY
166-470	10 X 3/4	50

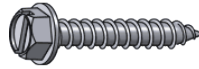
SLOTTED TRUSS HEAD SHEET METAL ZINC



#14 DIAMETER

Part #	SIZE	QTY
166-854	14 X 3/4	100

HEX HEAD SHEET METAL SCREWS ZINC



#6 DIAMETER

Part #	SIZE	QTY
167-008	6 X 3/8	50
167-010	6 X 1/2	50
167-012	6 X 3/4	50
167-014	6 X 1	50

#8 DIAMETER

Part #	SIZE	QTY
167-022	8 X 1/2	50
167-023	8 X 5/8	50
167-024	8 X 3/4	50
167-025	8 X 1	50
167-026	8 X 1-1/4	50
167-027	8 X 1-1/2	25

#10 DIAMETER

Part #	SIZE	QTY
167-042	10 X 1/2	50
167-043	10 X 5/8	50
167-044	10 X 3/4	50
167-045	10 X 1	50
167-046	10 X 1-1/4	50
167-047	10 X 1-1/2	25

#12 DIAMETER

Part #	SIZE	QTY
167-062	12 X 1/2	50
167-064	12 X 3/4	50
167-065	12 X 1	50
167-066	12 X 1-1/4	50
167-067	12 X 1-1/2	25
167-069	12 X 2	25

#14 DIAMETER

Part #	SIZE	QTY
167-081	14 X 1/2	50
167-082	1/4 X 5/8	50
167-083	14 X 3/4	50
167-085	14 X 1	50
167-086	14 X 1-1/4	25
167-087	14 X 1-1/2	25
167-089	14 X 2	25
167-091	14 X 2-1/2	25
167-093	14 X 3	25
167-097	14 X 4	25

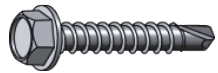
5/16 DIAMETER

Part #	SIZE	QTY
167-104	5/16 X 3/4	25
167-106	5/16 X 1	25
167-108	5/16 X 1-1/4	25
167-109	5/16 X 1-1/2	25

3/8 DIAMETER

Part #	SIZE	QTY
167-133	3/8 X 3/4	25
167-135	3/8 X 1	25
167-137	3/8 X 1-1/4	25
167-139	3/8 X 1-1/2	25

TEKS HEX HEAD SHEET METAL ZINC



#6 DIAMETER

Part #	SIZE	Drive	QTY
168-001	6 X 1/2	1/4	100
168-003	6 X 3/4	1/4	100
168-004	6 X 1	1/4	100

#8 DIAMETER

Part #	SIZE	Drive	QTY
168-010	8 X 1/2	1/4	100
168-011	8 X 5/8	1/4	100
168-012	8 X 3/4	1/4	100
168-013	8 X 1	1/4	100
168-014	8 X 1-1/4	1/4	50
168-015	8 X 1-1/2	1/4	50

#10 DIAMETER

Part #	SIZE	Drive	QTY
168-020	10 X 1/2	5/16	100
168-021	10 X 5/8	5/16	100
168-022	10 X 3/4	5/16	100
168-023	10 X 1	5/16	100
168-024	10 X 1-1/4	5/16	50
168-026	10 X 1-1/2	5/16	50

#12 DIAMETER

Part #	SIZE	Drive	QTY
168-042	12 X 3/4	5/16	50
168-043	12 X 1	5/16	50
168-044	12 X 1-1/4	5/16	50
168-046	12 X 1-1/2	5/16	50
168-048	12 X 1-3/4	5/16	25
168-049	12 X 2	5/16	25
168-050	12 X 2-1/2	5/16	25

#1/4 DIAMETER

Part #	SIZE	Drive	QTY
168-062	14 X 3/4	3/8	50
168-063	14 X 1	3/8	50
168-064	14 X 1-1/4	3/8	50
168-065	14 X 1-1/2	3/8	50
168-067	14 X 2	3/8	25
168-069	14 X 2-1/2	3/8	25
168-071	14 X 3	3/8	25

#14 WITH RUBBER WASHER

Part #	SIZE	QTY
168-162	14 X 3/4	50
168-163	14 X 1	50
168-164	14 X 1-1/4	50
168-165	14 X 1-1/2	50
166-166	14 X 1-3/4	50

#12 WITH CLIMASEAL HEAVY DUTY

Part #	SIZE	QTY
168-162	14 X 3/4	50
168-163	14 X 1	50
168-164	14 X 1-1/4	50
168-165	14 X 1-1/2	50
166-166	14 X 1-3/4	50

TEKS PHILLIPS BINDING HEAD ZINC



#6 PHILLIPS BINDING HEAD

Part #	SIZE	DRIVE	QTY
168-501	6 X 3/8	#1	100
168-502	6 X 1/2	#1	100
168-503	6 X 5/8	#1	100
168-505	6 X 3/4	#1	100
168-506	6 X 1	#1	100

#8 PHILLIPS BINDING HEAD

Part #	SIZE	DRIVE	QTY
168-510	8 X 1/2	#2	100
168-511	8 X 5/8	#2	100
168-512	8 X 3/4	#2	100
168-514	8 X 1	#2	100
168-515	8 X 1-1/4	#2	50
168-516	8 X 1-1/2	#2	50

#10 PHILLIPS BINDING HEAD

Part #	SIZE	DRIVE	QTY
168-520	10 X 1/2	#2	100
168-521	10 X 5/8	#2	100
168-522	10 X 3/4	#2	100
168-524	10 X 1	#2	100
168-525	10 X 1-1/4	#2	50
168-526	10 X 1-1/2	#2	50
168-528	10 x 2	#2	25

#12 PHILLIPS BINDING HEAD

Part #	SIZE	DRIVE	QTY
168-531	12 X 1/2	#2	50
168-533	12 X 3/4	#2	50
168-534	12 X 1	#2	50
168-535	12 X 1-1/4	#2	25
168-536	12 x 1-1/2	#2	25
168-538	12 x 2	#2	25

#14 PHILLIPS BINDING HEAD

Part #	SIZE	DRIVE	QTY
168-544	14 X 1	#2	25
168-545	14 X 1-1/4	#2	25
168-547	14 X 1-1/2	#2	25

TEKS PHILLIPS BINDING HEAD BLACK



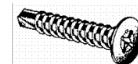
#8 PHILLIPS BINDING HEAD

Part #	SIZE	DRIVE	QTY
168-562	8 X 1/2	#2	50
168-564	8 X 3/4	#2	50
168-566	8 X 1	#2	50

#8 PHILLIPS BINDING HEAD

Part #	SIZE	DRIVE	QTY
168-570	10 X 1/2	#2	50
168-572	10 X 3/4	#2	50
168-574	10 X 1	#2	50

TEKS PHILLIPS FLAT HEAD ZINC



#8 PHILLIPS FLAT HEAD

Part #	SIZE	DRIVE	QTY
168-610	8 X 1/2	#2	100
168-612	8 X 3/4	#2	100
168-613	8 X 1	#2	100

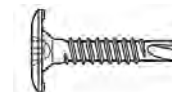
#10 PHILLIPS FLAT HEAD

Part #	SIZE	DRIVE	QTY
168-620	10 X 1/2	#2	100
168-622	10 X 3/4	#2	100
168-624	10 X 1	#2	100
168-625	10 X 1-1/4	#2	50
168-626	10 X 1-1/2	#2	50

#14 PHILLIPS FLAT HEAD

Part #	SIZE	DRIVE	QTY
168-643	14-14 X 3/4	#2	50
168-645	14-14 X 1	#2	50
168-646	14-14 X 1-1/4	#2	25
168-647	14-14 X 1-1/2	#2	25
168-649	14-14 X 2	#2	25
168-651	14-14 X 2-1/2	#2	25
168-653	14-14 X 3	#2	25

TEKS LARGE FLAT HEAD PHIL ZINC



10 LARGE FLAT HEAD TEKS

Part #	SIZE	DRIVE	QTY
168-746	10 X 3/4	POZI	100
168-748	10 X 1	POZI	100

TEKS PHILLIPS LARGE WASHER HEAD ZINC



#8 PHILLIPS BINDING HEAD

#8 PHILLIPS BINDING HEAD

Part #	SIZE	DRIVE	QTY
168-845	8 X 1/2	#2	50

Part #	SIZE	DRIVE	QTY
168-850	8 X 1/2	#2	50
168-854	8 X 3/4	#2	50
168-858	8 X 1	#2	50
168-862	8 X 1-1/4	#2	50

#8 PHILLIPS LOW PROFILE BINDING HEAD

Part #	SIZE	DRIVE	QTY
168-848	8 X 1/2	#2	50



TEKS PHILLIPS LARGE WASHER HEAD BLACK



#8 PHILLIPS BINDING HEAD

Part #	SIZE	DRIVE	QTY
168-881	8 X 1/2	#2	50
168-885	8 X 3/4	#2	50
168-889	8 X 1	#2	50
168-893	8 X 1-1/4	#2	50

PHILLIPS LARGE WASHER HEAD ZINC



#8 PHILLIPS BINDING HEAD

#8 PHILLIPS BINDING HEAD

Part #	SIZE	DRIVE	QTY
168-924	8 X 1/2	#2	50
168-928	8 X 3/4	#2	50
168-932	8 X 1	#2	50

Part #	SIZE	DRIVE	QTY
168-944	10 X 1/2	#2	50
168-948	10 X 3/4	#2	50

PHILLIPS LARGE WASHER HEAD BLACK



#8 PHILLIPS BINDING HEAD

#8 PHILLIPS BINDING HEAD

Part #	SIZE	DRIVE	QTY
168-960	8 X 1/2	#2	50
168-964	8 X 3/4	#2	50
168-968	8 X 1	#2	50
168-972	8 X 1-1/4	#2	50
168-976	8 X 1-1/2	#2	25
168-980	8 X 2	#2	25

Part #	SIZE	DRIVE	QTY
168-986	10 X 3/4	#2	50
168-990	10 X 1	#2	50
168-994	10 X 1-1/4	#2	25

PHILLIPS BINDING "F" HEAD THREAD CUTTING ZINC



#6-32 PHILLIP TYPE F THREAD CUTTER

Part #	SIZE	DRIVE	QTY
169-017	6-32 X 3/8	#2	100
169-018	6-32 X 1/2	#2	100
169-022	6-32 X 3/4	#2	100

#8-32 PHILLIP TYPE F THREAD CUTTER

Part #	SIZE	DRIVE	QTY
169-038	8-32 X 1/2	#2	100
169-042	8-32 X 3/4	#2	100
169-046	8-32 X 1	#2	100

#10-24 PHILLIP TYPE F THREAD CUTTER

Part #	SIZE	DRIVE	QTY
169-054	10-24 X 1/2	#2	100
169-056	10-24 X 5/8	#2	100
169-058	10-24 X 3/4	#2	100
169-060	10-24 X 1	#2	100

#10-32 PHILLIP TYPE F THREAD CUTTER

Part #	SIZE	DRIVE	QTY
169-068	10-32 X 1/2	#2	100
169-072	10-32 X 3/4	#2	100
169-074	10-32 X 1	#2	100

#12-24 PHILLIP TYPE F THREAD CUTTER

Part #	SIZE	DRIVE	QTY
169-082	12-24 X 3/4	#2	50
169-084	12-24 X 1	#2	50

1/4-20 PHILLIP TYPE F THREAD CUTTER

Part #	SIZE	DRIVE	QTY
169-088	1/4-20 X 1/2	#2	50
169-094	1/4-20 X 3/4	#2	50
169-096	1/4-20 X 1	#2	50
169-098	1/4-20 X 1-1/4	#2	50
169-099	1/4-20 X 1-1/2	#2	50

HEX HEAD "F" THREAD CUT ZINC



#10-24 HEX HEAD THREAD CUTTER

Part #	SIZE	Drive	QTY
169-258	10-24 X 3/4	1/4	100

14-20 HEX HEAD THREAD CUTTER

Part #	SIZE	Drive	QTY
169-294	14-20 X 3/4	5/16	50
169-295	14-20 X 1	5/16	50
169-296	14-20 X 1-1/4	5/16	50
169-297	14-20 X 1-1/2	5/16	25

5/16-18 HEX HEAD THREAD CUTTER

Part #	SIZE	Drive	QTY
169-316	5/16-18 X 1	3/8	25
169-318	5/16-18 X 1-1/4	3/8	25
169-320	5/16-18 X 1-1/2	3/8	25
169-322	5/16-18 X 1-3/4	3/8	25

3/8-16 HEX HEAD THREAD CUTTER

Part #	SIZE	Drive	QTY
169-342	3/8-16 X 3/4	3/8	25
169-343	3/8-16 X 1	3/8	25
169-344	3/8-16 X 1-1/4	3/8	25
169-345	3/8-16 X 1-1/2	3/8	25

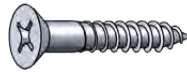
SLOTTED BINDING "F" HEAD THREAD CUTTING ZINC



#10-24 SLOTTED THREAD CUTTER

Part #	SIZE	QTY
169-500	10-24 X 3/4	100

PHILLIPS FLAT HEAD WOOD SCREWS ZINC



#6 DIAMETER

Part #	SIZE	QTY
170-223	6 X 1/2	100
170-225	6 X 3/4	100
170-227	6 X 1	100

#8 DIAMETER

Part #	SIZE	QTY
170-245	8 X 3/4	100
170-247	8 X 1	100
170-249	8 X 1-1/4	100
170-251	8 X 1-3/4	100

#10 DIAMETER

Part #	SIZE	QTY
170-275	10 X 3/4	100
170-277	10 X 1	100
170-279	10 X 1-1/4	100
170-281	10 X 1-1/2	100

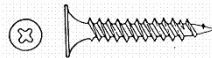
#12 DIAMETER

Part #	SIZE	QTY
170-315	12 X 1	100
170-317	12 X 1-1/4	100
170-319	12 X 1-1/2	100
170-323	12 X 2	100

#14 DIAMETER

Part #	SIZE	QTY
170-349	14 X 1-1/2	100
170-353	14 X 2	100

PHILLIPS DRY WALL SCREWS BLACK



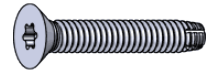
#6 DIAMETER

Part #	SIZE	QTY
170-612	6 X 1	100
170-613	6 X 1-1/8	100
170-614	6 X 1-1/4	100
170-615	6 X 1-1/2	100
170-616	6 X 1-5/8	100
170-620	6 X 2	100
170-622	6 X 2-1/4	100
170-624	6 X 2-1/2	100

#8 DIAMETER

Part #	SIZE	QTY
170-628	8 X 1-1/4	100
170-630	8 X 1-1/2	100
170-634	8 X 2-1/2	100
170-636	8 X 3	100

FLOOR BOARD SCREWS



1/4-20 FLOOR BOARD SCREWS (USE 7/32 OR "F" DRILL)

Part #	SIZE	QTY
171-103	1/4-20 X 1	100
171-105	1/4-20 X 1-1/4	100
171-110	1/4-20 X 1-1/2	100
171-115	1/4-20 X 2	100
171-119	1/4-20 X 2-1/4	100
171-120	1/4-20 X 2-1/2	100
171-122	1/4-20 X 3	100
171-124	1/4-20 X 3-1/2	100

5/16-20 FLOOR BOARD SCREWS (USE 9/32 OR "L" DRILL)

Part #	SIZE	QTY
171-140	5/16 X 2	50
171-145	5/16 X 2-1/4	50
171-155	5/16 X 2-1/2	50
171-160	5/16 X 3	50

TORKS DRIVERS

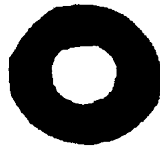
(ALSO SEE TOOL SECTION PG 400)



U
S
S



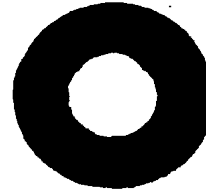
3/16



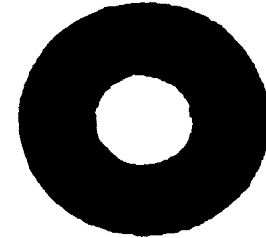
1/4



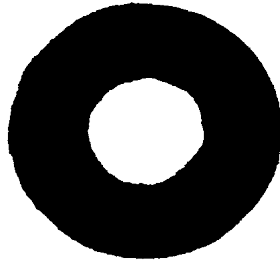
5/16



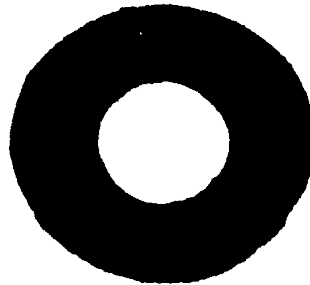
3/8



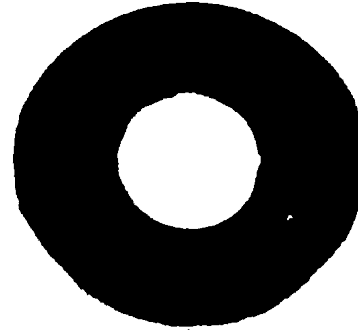
7/16



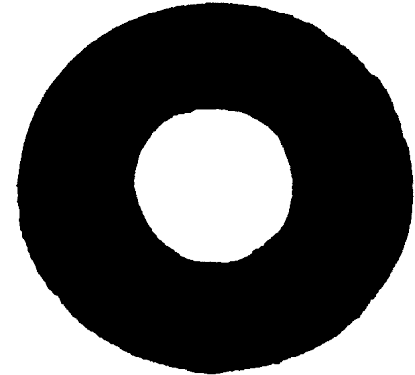
1/2



9/16



5/8



3/4

S
A
E



3/16



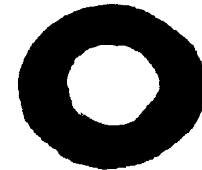
1/4



5/16



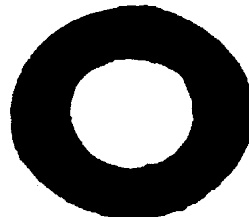
3/8



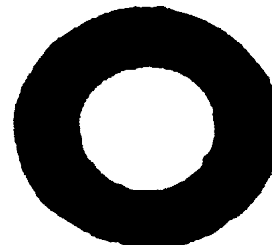
7/16



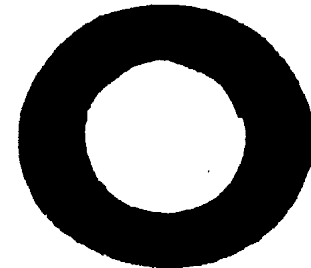
1/2



9/16



5/8



3/4